

artSHOWCASE

Relevant Reading for the Artistic Mind.



**The Man
Behind the
COMMON GRILL**

**Art Lovers in
LANSING**

**Northern Michigan
WINTER GETAWAYS**

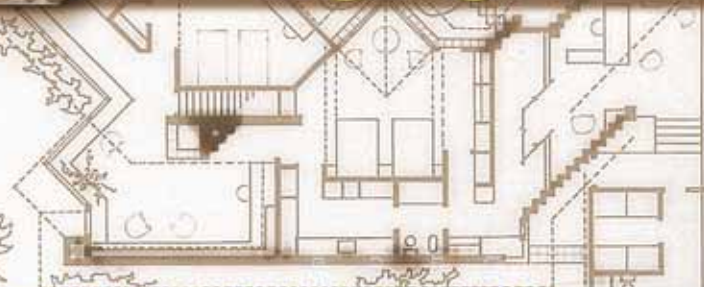
**Plus Don't Miss Our
HOLIDAY GIFT GUIDE**

**MAESTRO
ARIE
LIPSKY**



Tour my home
my passion
my masterpiece.

... "I'm going to be an architect" - Alden Dow 7 years



This is my home and studio

- Alden Dow 30 years



Midland
www.ABDOW.org
1.866.315.7678

KERRYTOWN CONCERT HOUSE

Classical. Inspirational. Experimental.



Sat 11/7/09 7 pm & 9 pm

THE ANDREWS SISTERS!

Celebrate America's most popular female singing group, the Andrews Sisters, with **Elizabeth Major, Wendy Bloom, and Monica Swartout-Bebow** accompanied by an instrumental ensemble and narrator. Reminisce as the ladies share the Andrews Sisters' friendly style and close vocal harmonies that won over America and lightened the hearts of enlisted soldiers during World War II.

Tix: 734-769-2999 Ann Arbor, MI kerrytownconcerthouse.com



Sun 11/29/09 4 pm

AN AFTERNOON OF AMERICAN MUSIC

Internationally renowned husband-and-wife duo **William Bolcom and Joan Morris** perform Bolcom's cabaret songs. **Violinist Gabriel Bolkosky** and **pianist Michele Cooker** perform Bolcom's 3rd Sonata and selections from Gershwin's *Porgy and Bess*.

The Detroit Opera House is your home for Family Holiday Entertainment!

DETROIT OPERA HOUSE
Home of the Michigan Opera Company
 Home of the Detroit Symphony Orchestra

Return Engagement!

Too Hot To Handel

The Jazz Gospel Messiah!

Sponsored by Mack Avenue Records

One Show Only!
Saturday December 12, 2009
at 8:00 p.m.

Presented by the Detroit Opera House and the Rackham Symphony Choir

With tenor Rodrick Dixon, Soprano Alfreda Burke, Alto Karen Marie Richardson joined by Alvin Waddles, piano, Dave Taylor, drums, Marion Hayden, bass and the Too Hot Orchestra.

Conducted by Suzanne Mallare Acton

\$99 FAMILY 4 PACK!
Includes tickets and parking while quantity lasts!

***FREE! PRE-PERFORMANCE CHAT WITH THE ARTISTS AT 7:00 P.M.**

***For Group Sales, call 313.404.0222**

Return Engagement!

Too Hot To Handel

The Jazz Gospel Messiah!

Sponsored by Mack Avenue Records

One Show Only!
Saturday December 12, 2009
at 8:00 p.m.

Presented by the Detroit Opera House and the Rackham Symphony Choir

With tenor Rodrick Dixon, Soprano Alfreda Burke, Alto Karen Marie Richardson joined by Alvin Waddles, piano, Dave Taylor, drums, Marion Hayden, bass and the Too Hot Orchestra.

Conducted by Suzanne Mallare Acton



• Detroit's Original Holiday Tradition returns to the Detroit Opera House for 5 Dazzling Performances!

The Nutcracker

The Cincinnati Ballet

December 3-6, 2009

Performances:

- Thursday, December 3, 2009, at 7:30 p.m.
- Friday, December 4, 2009, at 7:30 p.m.
- Saturday, December 5, 2009, at 2:30 p.m.
- Saturday, December 5, 2009, at 7:30 p.m.
- Sunday, December 6, 2009 at 2:30 p.m.

Family matinee performances
 Feature the following:

- Professional face painting, \$5 donation
- Santa and Nutcracker available for photos
- Live reindeer
- Sugar Plum Parade on stage following the performance
- Buffet lunch, \$10, Call 313.237.SING for details



The Cincinnati Ballet is a 501(c)(3) non-profit organization. All proceeds from the sale of tickets and merchandise are used to support the Ballet's operations and to fund the education and training of its dancers. For more information, please visit www.cincinnati-ballet.com.

FOR TICKETS AND PRE-PAID PARKING CALL 313.237.SING or visit michiganopera.org

- 06 PUBLISHER'S LETTER 22 MUSEUM FOCUS
12 GALLERY FOCUS *UofM Museum of Art*
 The Chelsea Gallery 27 CALENDAR OF EVENTS
16 HOLIDAY GIFT GUIDE 31 PERFORMANCE FOCUS
 Boar's Head Festival



Photo by Amy Johnston



13 The Man Behind the COMMON GRILL

CULINARY ART

Meet Craig Common, the man behind the grill—Chelsea's Common Grill, that is. We sat down with Craig to find out, among other things, what he's got cooking this holiday season.

18 Northern Michigan WINTER GETAWAYS

TRAVEL & CULTURE

Thinking about taking advantage of some of Northern Michigan's outstanding winter activities this season? Let us help you get a head start planning your family's Northern Michigan Winter Getaway.

25 Art Lovers in LANSING

VISUAL ART

There's more to Michigan's State Capital than legislative offices and a passion for the color green. The area also offers much to love about its fine art offerings.



CONTENTS

08 MAESTRO ARIE LIPSKY

Celebrates 10 Years
with the Ann Arbor
Symphony Orchestra



Photos by Amy Johnston

PERFORMANCE ART

Described by Ann Arbor Symphony Orchestra Executive Director Mary Steffek as a “musician’s musician,” Maestro Arie Lipsky guides the A2SO forward with supreme confidence and a commitment to continuing artistic excellence.

On the Cover:

*Arie Lipsky, Ann Arbor Symphony Orchestra Conductor
Photo by Amy Johnston*

Welcome to the New Art Showcase Magazine

Thank you for picking up the premiere issue of the newly enhanced *Art Showcase Magazine*. As you may know, *ASM* was launched in July 2003 as Southeastern Michigan's premier print resource for visual fine art. It is my privilege to present to you an enhanced editorial focus that now comprehensively covers on a bi-monthly basis not only visual fine art, but all of the higher arts including performance art—theatre, dance and music—and culinary art, plus travel and culture articles.

In every issue, we will strive to offer timely and insightful stories about high art in Southeastern Michigan. An expanded calendar of events will also be an integral element in our new format (see p.27-31), with even more entries to be found on our website, keeping you well informed about entertainment opportunities in the arts throughout the year. Please send your event submissions to calendar@ArtShowcaseMagazine.com.



Meanwhile, you'll find future copies of *ASM* distributed free at area art galleries, restaurants, theatres, cafes, bookstores, hotels and other high traffic venues such as auditoriums, museums, libraries, shopping centers, universities and hospitals. In addition, you can pick up a copy at various art-related events throughout the year, including art exhibitions, fine art shows, musical concerts, theatre performances, dance recitals and more.

We hope that you find much enjoyment within these pages, and that *ASM* becomes a catalyst to maximize the pleasure you find in the arts in Ann Arbor and its surrounding areas. There are so many extraordinary opportunities to enjoy in our vibrant communities, and we are lucky to have them. But if we hope to keep them, we believe that increased support, awareness and accessibility to local high art and culture has never been more important than right now. To that end, we thank you for your support, and look forward to a long and artful future.

Kindest regards,

Jonathan E. Himlin
Publisher

[>>VISIT OUR BLOG](#)

www.ArtShowcaseMagazine.com/news

artSHOWCASE

Relevant Reading for the Artistic Mind.

PUBLISHER

Jonathan E. Himlin

CONTACT INFORMATION

LionTreeCommunications@Gmail.com

ADVERTISING

734.904.5904

ads@ArtShowcaseMagazine.com

WEBSITE

www.ArtShowcaseMagazine.com

VISIT THE ASM BLOG

www.ArtShowcaseMagazine.com/news

EVENT SUBMISSIONS

Calendar@ArtShowcaseMagazine.com

Art Showcase Magazine is Southeastern Michigan's premier print resource for fine entertainment in the arts. Our mission is to cultivate among our readers enhanced support, awareness and accessibility to local high art and culture. We help our readers to maximize the enjoyment they find in the arts, and we assist them in pairing their lifestyle interests with local arts opportunities.

If you are interested in contributing art-related articles for ASM, please send article ideas, writing samples and/or past work to the email address shown above.

Art Showcase Magazine accepts no responsibility for the return of submitted manuscripts, artwork, photographs, or images of any kind whatsoever, whether solicited or unsolicited. A stamped, self-addressed envelope must accompany any request for the return of submissions.

Opinions of Art Showcase contributing writers are not necessarily those of the publisher. Reproduction in whole or in part of any text, photographs or illustrations without written permission from the publisher is strictly prohibited.

ART SHOWCASE MAGAZINE is published by Lion Tree Communications.



Printed in the USA.
©2009 Art Showcase Magazine.
All rights reserved.

PLEASE RECYCLE.




Sticks.

exclusively at
Carol Roeda Studio

319 S. Main Street
(734) 994-3389
carolroedastudio.com

★
Bring in this ad
& receive
20% off one item!


TEN THOUSAND VILLAGES



ONE STUNNING CENTERPIECE

Timeless reflections.
Enduring patterns in the mosaic of life.

Artisans of Moradabad, India, create this magnificent centerpiece of timeless beauty.
Scrollwork Candleholder, \$44
Amber Mosaic Tea Lights, \$6 each




TEN THOUSAND VILLAGES

HARMONY. MADE BY HAND.™
A Fair Trade Retailer.

303 S Main St
Ann Arbor, MI 48104
(734) 332-1270

annarbor.tenthousandvillages.com

Bring in this ad to **SAVE 20%** on any one regular priced item.
Offer valid at participating stores until 12/31/09. Not valid with other discounts, purchase of gift cards.



TEN THOUSAND VILLAGES
ONE REASON WHY
Gifts of quality
improving quality of life.
Share yours ▶ www.myonereason.com

MAESTRO ARIE LIPSKY

Photos by Amy Johnston

Celebrates 10 Years with the Ann Arbor Symphony Orchestra

By Nathaniel Adam

A year after their 80th season of sharing an exceptional level of symphonic music with the community, the Ann Arbor Symphony Orchestra (A2SO) has another important anniversary to celebrate—their 10th year under the artistic direction of Maestro Arie Lipsky.

Lipsky, born in Israel, is a trained cellist and flautist as well as a veteran conductor who has worked with some of the finest artists and orchestras in the world (from both ends of the baton). He was the principle cellist in the Buffalo Philharmonic Orchestra before becoming a resident conductor for them in 1994. It was this kind of experience that put him at the top of the A2SO's list when it came time to hire a new leader.

"Arie was the overwhelming favorite in the conductor search," said Mary Steffek Blaske, Executive Director of the A2SO since 1996, recalling her hire of Lipsky, "because of his profound leadership on the podium, in the classroom, and in the community. He is a musicians' musician as well as a respected leader."

Since accepting leadership of the A2SO Lipsky has continued to appear as a guest conductor at venues around the world. He even performs cello regularly, frequently with Symphony string ensembles for various chamber music recitals, and his flute often makes an appearance during his pre-concert lectures. When asked



about his favorite memory with the Symphony, he had a few thoughts immediately.

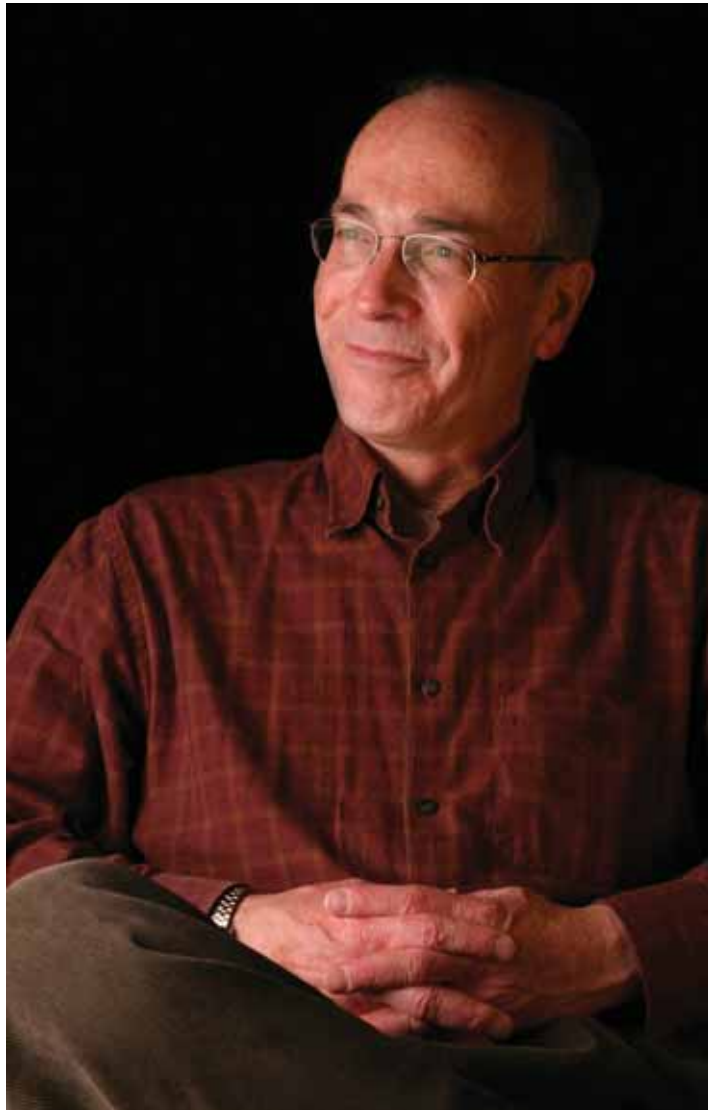
“Besides the excitement of my first concert, there was the elation and sense of fulfillment following the last chord of *Mahler's Second [the "Resurrection" Symphony]*. I almost fainted,” Lipsky recalled. “I also remember the smiles on the faces of the young singers from Huron and Pioneer High Schools after an exhilarating performance of *Orff's Carmina Burana*. And, most recently, the almost half-a-minute of quiet awe after the hushed ending of *Mahler's Fourth Symphony* last season.”

Lipsky has performed a large repertoire of orchestral works with the Ann Arbor Symphony in his decade-long tenure, including new works and premieres in addition to the concert-hall classics of Beethoven and Mahler. For the A2SO's 75th anniversary, the Symphony, along with the Michigan Theater, commissioned a new work from the University of Michigan's own Michael Daugherty for theater organ and symphony, the performance of which was broadcast on national radio. Last year, they opened their 80th season with contemporary composer Paul Fetler's *Three Poems by Walt Whitman* (with narration courtesy of Mary's husband, Thomas Blaske); the performance was recorded live, and will be released with other Fetler works on the Naxos label in December (it is already available for digital download purchase from the Naxos website).

In addition to directing the orchestra's regular concert series, Lipsky has seen a number of new programs added to the Symphony's outreach, including a family concert series, *the Stained Glass* (collaborating with local houses of worship), *KinderConcerts: Music and Motion*, and the very popular *Afternoon Delights* concert series.

“His preconcert lectures are wildly popular,” Blaske said. “And his school visits are key to growing the next generation of musicians and music lovers here in Southeast Michigan.”

Lipsky does seem to get special enjoyment out of working with the local young musicians through his regular school visits and the orchestra's *Side by Side* concerts, in which the A2SO shares the stage with a local high school—unquestionably a uniquely valuable opportunity for the young players. Asked if he had any words of wisdom for budding conductors or amateur musicians curious about the profession-on-the-podium, he responded candidly that “conducting is a tough career, so if you decide to embark on it you must work hard and practice constantly; and always try to go beyond the notes to find the true meaning—the message—and the vision of the pieces you perform.” [more>>>](#)



*“He is a musicians’
musician as
well as a
respected leader.”*

— A2SO Executive Director Mary Steffek Blaske on Arie Lipsky.



Ann Arbor Symphony Orchestra Holiday Concert

Christmas from the Heart

Featuring American Idol finalist David Archuleta

Friday, November 27, 2009 at 8 p.m. at Hill Auditorium

The newest item on the growing record of special events and programs the A2SO has offered during Lipsky's time as artistic director is this month's very special *Holiday Concert-Christmas from the Heart*, a joint project with Radio Disney. The endeavor brings the Symphony together with 18-year-old American Idol finalist David Archuleta. This concert, which will entertain all comers on Friday, November 27, 2009 at 8 p.m. at Hill Auditorium on the University of Michigan Campus, is one of the first few stops on Archuleta's Christmas from the Heart tour to promote his Christmas album of the same name. It will be the young singer's first such performance with symphony orchestra, and will feature orchestral arrangements commissioned specifically for the event. In addition to songs from Archuleta's Christmas album, and a selection of his original songs, the A2SO will perform Tchaikovsky's *Nutcracker Suite* and other orchestral holiday favorites.

"This performance will showcase the A2SO to new audiences, while hopefully creating a new tradition of holiday concerts, bringing together the community, our orchestra, and even outside artists," Lipsky remarked, excited by the promise of this new project's success. "It's beneficial for everyone!"

So far this season, the A2SO has already been graced by the presence of some exceptional guest soloists of a highly classical nature. For the Beethoven Festival that opened the 2009-2010 season, the brilliant Ilya Kaler performed the *Beethoven Violin Concerto*, and 23-year-old David Requiro, a graduate of the University of Michigan's Master's program in cello performance, played Haydn's *Cello Concerto No. 2* at the October Serenade for Strings concert. Highlights of the 2009-2010 season yet to come include a Mozart Birthday Bash on January 23, and an American Celebration on March 13, featuring music by U of M's Grammy Award and Pulitzer Prize-winning composer William Bolcom, Dvorak's *New World Symphony* and Gershwin's *Piano Concerto*.

Looking ahead, toward his next ten years with the A2SO? Lipsky mused, "Of course I hope to maintain our level of artistic excellence, but also to plan steady growth in the number of concerts

we offer, and to continue and deepen our involvement with the fantastic artistic resources available to us in Ann Arbor—such as the many choirs, soloists, dancers, poets, and artists—while establishing long-term financial stability and building our endowment to make sure the orchestra continues to have the resources to thrive.”

Lipsky currently divides his time between Ann Arbor, upstate New York, and Ashland, Ohio where he conducts the Ashland Symphony Orchestra. The A2SO obviously values the success he has brought them during his time here in Michigan.

“Arie is a tremendous ambassador for music, and for the Ann Arbor Symphony,” Blaske concluded. “Clearly, he is a leader with whom it is a privilege for all of us—musicians, staff, board, audience, and community—to work.”

Tickets for *Christmas from the Heart* and A2SO Mainstage Concerts can be purchased by phone, in person, or online. Mainstage Concerts start at \$6, and *Christmas from the Heart* tickets start at \$19 (plus service fees). For more information or to purchase tickets, call the office at 734.994.4801, or visit the A2SO website: www.a2so.com. *ASM*

ANN ARBOR SYMPHONY ORCHESTRA UPCOMING CONCERT EVENTS

November 13

KinderConcert with Arie

9:30 & 10:30 a.m., Ann Arbor District Library

November 14

Brahms & Friends

8 p.m., Michigan Theater

November 15

Chenille Sisters with Ariel & Zoey

4 p.m., Michigan Theater

November 16

KinderConcert with Arie

9:30 & 10:30 a.m., Ypsilanti District Library

November 18

Afternoon Delights

1 p.m., Jewish Community Center

November 27

Christmas from the Heart

8 p.m., Hill Auditorium

December 12

Sing Along with Santa

4 p.m., Bethlehem United Church of Christ

Brahms & Friends
Featuring Anton Nel

BRAHMS
Piano Concerto No. 2
with Anton Nel

PROKOFIEV
Overture on Hebrew
Themes

BIZET
Symphony No. 1
in C Major

November 14
8 PM
Michigan Theater
Tickets from \$6
www.a2so.com
734/994-4801

ANN ARBOR SYMPHONY ORCHESTRA
A2SO
MUSIC IN THE KEY OF A!

Sponsored by:
Ray & Eleanor Cross Foundation

engage.

where excellence comes to

Over 450 performances each year -
most are free!
Events hotline 734.764.0583
League Ticket Office 734.764.2538
www.music.umich.edu

University of Michigan School of
Music, Theatre & Dance

Everyone Loves A CELEBRATION

Local Artist Jan Dorer: A 45-Year Retrospective

By Kim Brown

Chelsea Gallery presents *Celebrate*, a retrospective of celebrated and award-winning abstract acrylic painter Jan Dorer, opening Saturday, November 14, and on display through the remainder of 2009.

Dorer, of Chelsea, Michigan, boasts a successful 45-year career that has included first-place awards at numerous competitions and art shows. With husband Gil as her business partner, she began her storied career showing and selling paintings at the early Ann Arbor Art Fairs in 1963.

Dorer's paintings have been described as abstract and impressionistic, with bold colors used in naturalistic palettes. The pieces presented in *Celebrate* represent several phases of maturation and change in Dorer's work. Husband Gil described how Jan often pointed out unique or striking landscape features in their travels that he would notice months later in new paintings. The influence of a trip to Alaska can be seen in one of her signature pieces, *Ice Flow*. Giclee prints of *Ice Flow* will be available at Chelsea Gallery.

"I sincerely believe that I paint what I paint because of who I am," said Dorer. "I hope my work reflects the softness—and yet the boldness—the sensitivity of lines together with the strength of vivid color, sometimes a hint of realism buried in the sea of abstraction. Maybe this is who I am."

The Dorers left their respective careers in teaching in the early '70s to pursue art full time. The duo attended shows year 'round, exhibiting from Florida to Michigan and until recently remained a fixture at the Ann Arbor Art Fairs, last showing at the South University show in 2008. Growing up in Oxford, Michigan as Jan Bovay, she and Gil met in Mt. Pleasant at Central Michigan University in 1952 where they both studied education. The Dorer's have two children, Bob and Cyndy, and two grandchildren.

A number of original artworks from the Dorers' private collection will be on display as well, and available for sale.



Celebrate

A Retrospective of Local Abstract Painter Jan Dorer
Chelsea Gallery, 115 South Main, Chelsea, MI 48118
734.475.1008 | www.chelsea-gallery.com
Opens Saturday, Nov. 14. Reception from 6-9 p.m.

Dorer's paintings have been featured on numerous covers of textbooks by Allyn and Bacon Publishing and West Publishing. Her paintings have been purchased by more than fifty corporations as well as numerous private collectors both here and in thirteen foreign countries.

Chelsea Gallery is owned and operated by Gary and Doris Galvin and features original art by regional artists. Art on display includes paintings in a variety of media and styles as well as forged iron, bronze sculptures, blown, fused and stained glass, pottery and handcrafted jewelry. Chelsea Gallery also offers framing and matting services and has a café with an espresso bar and desserts and hosts private parties and receptions. [ASM](#)



The Man Behind the GRILL

Photos by Amy Johnston

Meet Craig Common of
Chelsea's Common Grill

By Sandra Xenakis

Few people who visit Chelsea for a day or two leave without eating at the Common Grill, in the heart of downtown. Many drive in from other parts of the state just for the experience, and some call it their favorite restaurant in America. Sophisticated and unpretentious at the same time, the Common Grill offers outstanding and imaginative bistro food served in a warm, lively atmosphere. [more>>>](#)



The man behind the Grill, Craig Common, came to town about the same time that actor Jeff Daniels opened his playhouse, the Purple Rose Theatre, a half-block away. This, of course, was no accident.

A self-taught chef, Craig grew up in Garden City and Dearborn Heights, Michigan, and started his career at the age of 14 as a dishwasher in a local eatery. “From the first day, I knew a restaurant was where I would hang my hat,” he affirms.

He became interested in cooking in high school and cites his mother as his biggest influence. Later he studied at Northwood University, traveled in Europe, and then joined the C.A. Muer Corporation, working his way up from a kitchen manager to Corporate Chef and overseeing sixteen Muer restaurants in Michigan, Ohio, and Florida. (Craig says that Muer’s Executive Chef Larry Pagliara had a major influence on his professional career.) After 12 years of cooking for various kitchens, he decided in 1990 to open his own place and started scouting locations in Brighton and Milford.

“But one day,” he remembers, “I received a call from Bob Daniels to come look at a

Common Grill

is located at 112 S. Main Street
in downtown Chelsea. Hours are
Tues-Thurs: 11am-10pm, Fri-Sat: 11am-
11pm, Sun: brunch, 11am-3pm,
dinner, 3pm-9pm.
734.475.0470 | www.commongrill.com

place in Chelsea.” Bob Daniels is owner of Chelsea Lumber Company and Jeff’s father. The building under consideration was the old William Schenk General Store, built in 1892, vacated in 1989 by Dancers Department Store.

“A new theater was opening in Chelsea and the city fathers wanted a restaurant to partner the theater,” Craig recalls. “We bought the building and renovated it, adding the now-famous Chelsea murals on either wall. The rest is history.”

The Common Grill opened its doors to instant success in July of 1991. Known for its fresh seafood and constantly changing menu, the restaurant’s offerings have been

hailed by *Gourmet* magazine, *The Detroit News*, and other publications as “fresh and novel American cuisine.”

The restaurant recently implemented its fall menu—one Craig considers his favorite. He works with a farm in Indiana that supplies him with farm raised, hormone-free chicken, served at the Grill as brick-roasted chicken breast with a little preserved lemon, rosemary, and garlic. The fall menu also includes Black Angus short rib served with roasted root vegetables and mascarpone polenta.

Craig has authored two cookbooks featuring some of his most popular dishes, along with color photographs, detailed instructions, and ingredient lists. *The Common Grill Cookbook* (2000) and *Return to the Common Grill Cookbook* (published in 2005, with all new recipes not in the first book,) are available for purchase at the restaurant.

While the restaurant business may have suffered overall from Michigan’s economic downturn, the Common Grill has felt very little effect. Craig attributes his ongoing success to a focus on his original mission: to serve quality food with quality service. “We constantly have to be aware of food trends and reinvent our menu to keep it fresh and appealing,” he says. “We are lucky to have many loyal guests that have supported us through the years.”

In turn, the Common Grill offers support to the community and several charitable organizations, including the Ann Arbor Art Association Winefest, Toys for Tots, March of Dimes, and Save a Heart Organization. Craig Common has long been active in the Chelsea Retail Advisory Council, and is one of the guiding lights behind the city’s popular “Sounds and Sights” summer music series.

Fall and winter bring special events to the restaurant, including the Holiday Wine Show (6-9 pm on Nov. 9 this year) with several vendors and more than 60 different wines to sample, many available for

purchase. The Common Grill also serves a four-course dinner for New Years Eve.

So what does a master chef serve at home on Thanksgiving Day?

“There’s nothing like traditional food simply prepared,” Craig says. He and his wife, Donna, share a conventional Thanksgiving meal with their children Rachel, 24, Brett, 22, and assorted relatives. “I do get raves about my turkey stuffing, which includes apricots, cherries, and nuts.”

Craig serves a special dinner for Christmas Eve for both sides of the family, with something different every year. One time there was an Italian theme with four courses. He hints that this year a roasted beef tenderloin might be on the menu. And what about dessert?



“Right now I’m thinking about a pecan caramel nut tart or a spin on a traditional German chocolate cake. I just added a pumpkin cheesecake with Michigan maple whipped cream to the restaurant menu, and that’s getting a favorable response.”

Craig admits he sometimes finds it challenging to strike a balance between his responsibilities as restaurant owner and chef: “I really have to balance my creative side and business side when making decisions for the restaurant. Some of the dishes I’d like to serve would not make sense to do in a high volume restaurant such as ours.”


On the other hand, he doesn’t feel he’s had to make many sacrifices to accommodate both roles. “Living in Chelsea has allowed me to be close to the restaurant and also my family,” he says. “I am lucky to have developed some great friends while living here.”


The Common Grill is located at 112 S. Main Street in downtown Chelsea. Hours are Tues-Thurs: 11am-10pm, Fri-Sat: 11am-11pm, Sun: brunch, 11am-3pm, dinner, 3pm-9pm. The restaurant offers banquet and carryout services. Reservations are available for parties of six or more by calling 734.475.0470. Parties of less than six can call ahead after 3:30pm for same-day seating. Tickets for the Nov. 9th Holiday Wine Show are \$50. See the website at www.commongrill.com for menus and further information. [ASM](#)

ESCANABA

“Everyone has a home somewhere ...”

a World Premiere by Jeff Daniels Directed by Guy Sanville
Now showing through **January 23**

 The Purple Rose Theatre Company
Box Office: (734) 433-ROSE (7673)
www.purplerosetheatre.org

Exclusively underwritten by 

SELO/SHEVEL GALLERY

An Award-Winning Gallery now in its 27th year in Downtown Ann Arbor, Selo/Shevel features the very finest in contemporary American Crafts and Imported Folk Art.

301 South Main Street,
at the corner of Main and Liberty
734-761-4620 • www.seloshevelgallery.com

Here are Some Ideas to Give You A Headstart on Your **Holiday** Shopping!

[1] HEAVEN SENT

One of hundreds of handcrafted Green Gifts, available at 16 Hands at 216 S Main Street in downtown Ann Arbor, is this beautiful "Opening Angel" by Sharon Clark. 25x14x5" **\$54**. [734.761.1110](tel:734.761.1110) | www.16handsgallery.com.

[2] SOLAR ECLIPSE PENDANT

Give her the sun and the stars with an 18k Toby Pomeroy Solar Eclipse pendant, topped off with a sprinkle of gypsy set diamonds. Available in silver, 14k, and 18k with or without diamonds. Available exclusively at Abracadabra Jewelry, 205 E Liberty St., Ann Arbor. **Call for pricing**. [734.994.4848](tel:734.994.4848) | www.abragem.com.

[3] PICK ONE UP

A set of four Botanica hor d'oeuvre picks in food safe, tarnish resistant pewter for the cocktail hour or for any appetizer platter. Selo / Shevel Gallery, 301 South Main Street, at the corner of Main and Liberty in Ann Arbor. **\$30**. [734.761.4620](tel:734.761.4620) | www.seloshevelgallery.com.

[4] POPPY PANEL

This Original Victorian-Style Stained Glass Poppy Panel by Joe Kirk is 29" and features a handmade Cherry frame. Find it only at Emerald Dragonfly Art Gallery and Gift Shop, 419 Detroit Street in Ann Arbor. **\$550**. [734-997-7880](tel:734-997-7880) | www.emeralddragonflyonline.com.

[5] MAGNETIC

With the click of a magnet, Carol's hand painted adornments attach to her colorful hand lacquered frames. Come to Carol Roeda Studio, 319 S. Main Street in Ann Arbor, and create your own frame and wall art! **\$8-\$35**. [734.994.3389](tel:734.994.3389) | www.carolroedastudio.com.

[6] DANCE WITH ME

This graceful pair of dancers, found only at Ten Thousand Villages, express the harmonious joy of life. This statue is one of our special Traveler's Find items and originate from Africa, in Burkina Faso. They are cast in bronze and created using the ancient lost wax bronze casting process. **Call for price**. [734.332.1270](tel:734.332.1270) | www.annarbor.tenthousandvillages.com.

[7] A PERFECT FIT

Shoreline boot by UGG. Available at Van Boven Shoes, Washtenaw County's largest UGG boot and shoe dealer. 17 Nickels Arcade, Ann Arbor. **\$230**. [734.665.7240](tel:734.665.7240) | www.vanbovenshoes.com

[8] NOW THAT'S NEWS

What a find at FOUND, Level 2 Kerrytown, 407 N. 5th Ave, Ann Arbor. Baskets woven from recycled Ann Arbor News pages by local artisan Lydia Kaku. **\$32-\$65**. [734.302.3060](tel:734.302.3060) | www.foundgallery.com.

[1]



[8]



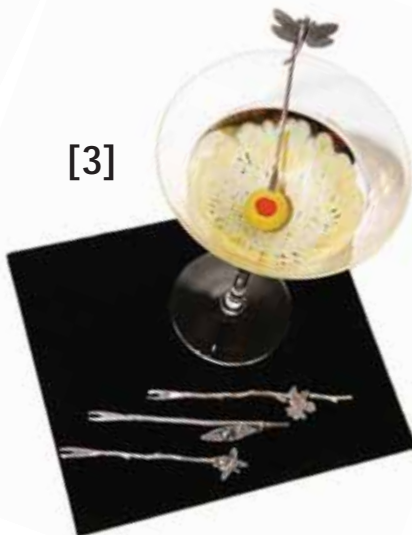
[7]



[2]



[3]



[4]



[6]



[5]



Northern Michigan WINTER GETAWAYS



The terrain park at Boyne Mountain Resort features a monstrous 700-foot superpipe.



At Boyne Highlands Resort, guests can enjoy dog sled rides of 30 minutes or a full hour.

Okay, so maybe you can't pull off a stunt like this on the giant superpipe at Boyne Mountain. But Michigan's Northern Lower Peninsula holds in store plenty of winter fun and family activities that you'll absolutely flip over—figuratively speaking, of course.

But where to begin? There are hundreds of places from which to choose to find your frosty fun. To help you out, we've compiled information on five of the top resort properties for winter activities in the state—Boyne Mountain, Boyne Highlands, Shanty Creek, Grand Traverse Resort & Spa and Crystal Mountain. So whether it's a romantic winter weekend escape, or a week-long family adventure, you'll have everything you need to plan your Northern Michigan Winter Getaway this season.

BOYNE MOUNTAIN RESORT

1 Boyne Mountain Road | Boyne Falls, MI 49713
800.GO.BOYNE (462.6963) | www.boyne.com

Skiing usually begins around Thanksgiving (call ahead).

The Run Down: Pretty much anything you can think to do, you'll find it at Boyne Mountain Resort. Cruise down the slopes on skis, snowboards, or tubes. Try your hand at nordic skiing, snowshoeing, or telemark. Turn a figure 8 on the skating rink. Take a lesson to learn to ski or improve your snowboarding form. Enjoy romantic nights on a horse drawn sleigh ride, or take to the trails on snowmobiles. Hang 10 at Avalanche Bay, Michigan's largest indoor water-park. Or simply retreat from it all with a day at Solace Spa.

BOYNE HIGHLANDS RESORT

600 Highland Drive | Harbor Springs, MI 49740
231.526.3000 | www.boyne.com

Double Your Fun: Boyne Highlands, sister property to Boyne Mountain, is only 27 miles away. Lift tickets are interchangeable at the two properties so you can ski or snowboard at both on one ticket!

What We Love Best: Dog-sled rides are available at Boyne Highlands on most winter weekends; 30 minute (\$75) and hour long (\$150) rides are available. Sleds typically accommodate two adults or one adult and two children.

Package Specials: Lift and Lodging packages start at \$99 per person, per night and include: lodging at Boyne Mountain or Boyne Highlands, unlimited lifts, breakfast and tubing. Plus, kids 8 years and younger sleep, ski/ride and eat breakfast free when staying with their parents on a Lift and Lodging package, and juniors ages 9-15 start at only \$19.



SHANTY CREEK RESORTS

1 Shanty Creek Rd. | Bellaire, MI 49615
800.678.4111 | www.shantycreek.com

Weekend skiing opens on Thanksgiving Day (call ahead). Full skiing begins December 18.



The Run Down: Shanty Creek Resort offers a 4,500-acre winter playground, featuring two skiing mountains, with a convenient shuttle service between them. Its *Purple Daze* terrain park won the 2008 Best Terrain Visitors Choice Award from OnTheSnow.com. Upgrades this year include superior snow-making capabilities, additional glade runs and new rental equipment.

The property boasts your choice of three unique resort villages, The Spa at Shanty Creek, a fitness center, and five unique dining venues. You can spend time on a horse-drawn sleigh ride or get warm at one of their roaring bonfires. It is also conveniently located to the five nearby wineries of the Old Mission Peninsula.

What We Love Best: This winter, Shanty Creek introduces America's Cheapest Lift Ticket! Only \$10 per day for Summit Mountain only (Summit opens Dec. 18). Plus, with purchase of a Summit Mountain lift ticket, guests can enjoy \$15/day rentals. So a family of four, all skiing/riding at Summit, can spend the day on the slopes for only \$100 including rentals.

[more>>>](#)



GRAND TRAVERSE RESORT & SPA

100 Grand Traverse Village Blvd. | Acme, MI 49610
231.534.6000 | www.grandtraverseresort.com
Skiing usually begins early December (call ahead).

The Run Down: While downhill skiing isn't an option here, cross-country skiing or snowshoeing on up to 25 kilometers of nearby groomed trails is. Or, rent a snowmobile and tackle more than 200 miles of trails. Take the family on a horse-drawn sleigh ride at the nearby Antler Ridge Farm, or spend the day ice skating. To relax, visit Spa Grand Traverse and try the new Vinotherapy Services to boost your skin's moisture and improve overall appearance.

What We Love Best: Golf in the winter! That's right. Take a lesson from the Resort's renowned Head Golf Professional Scott Hebert, or practice your swing at the Winter Golf Center. It features three heated indoor/outdoor hitting bays with garage-style doors that open on the practice range, so you can actually see the flight of your ball. Finding it after it lands—well that's another story.



CRYSTAL MOUNTAIN RESORT & SPA

12500 Crystal Mountain Dr. | Thompsonville, MI 49683
231.378.2000 | www.crystalmountain.com
Skiing opens Thanksgiving Day (weather permitting).

The Run Down: Crystal Mountain features 45 downhill ski & snowboard trails (27 are lit for nighttime skiing), 40km of cross-country trails, the Crystal Spa, an outdoor Art Park with more than 40 sculptures, and amazing lodging options with over 250 hotel rooms, suites, condominiums, townhomes and resort residences to call home. Crystal Mountain has been rated #1 Resort in the Midwest by SKI magazine, and was recently named one of the Top Ten Snow Resorts for Families by Parents Magazine.

What We Love Best: It's the food. Crystal Mountain has two chefs who graduated from the Culinary Institute of America: Food & Beverage Director Kristin Kiteley and Executive Chef Darren Hawley. We recommend the Betsie River Rock Steak. They heat a river stone to 500 degrees and then cook it on the stone right there at your table!

NORTHERN MICHIGAN TRAVEL RESOURCE LIST

VISITORS BUREAUS

Michigan Economic Development Corp.
Travel Michigan
888.784.7328 | www.michigan.org

Traverse City Convention & Visitors Bureau
231.947.1120 | www.mytraversescity.com

Boyne Country Visitors Bureau
800.845-2828 | www.boynecountry.com

TRAVERSE CITY AREA DINING

Amical
229 E. Front St., Traverse City, MI
231.941.8888 | www.amical.com

Aerie (Grand Traverse Resort & Spa)
100 Grand Traverse Village Blvd., Acme, MI
231.534.6000 | www.grandtraverseresort.com

The Blue Tractor Shop
423 South Union St., Traverse City, MI
231.922.9515 | www.bluetractorcookshop.com

The Catch Island Grill
120 Park St., Traverse City, MI
231.933.7200 | www.catchislandgrill.com

Hanna Bistro
118 Cass St., Traverse City, MI
231.946.8207 | www.hannabistrobar.com

Old Mission Tavern
17015 Center Road, Traverse City, MI
231.223.7280 | www.oldmissiontavern.com

Sleder's Family Tavern
717 Randolph St., Traverse City, MI
231.947.9213 | www.sleders.com

Trattoria Stella
1200 W. Eleventh St., Traverse City, MI
231.929.8989 | www.odawacasino.com/sage

PETOSKEY AREA DINING

The City Park Grill
432 E. Lake Street, Petoskey, MI
231.347.0101 | www.cityparkgrill.com

Sage
1760 Lears Road, Petoskey, MI
231.344.4420 | www.odawacasino.com/sage

Stafford's Pier Restaurant
102 E. Bay Street, Harbor Springs, MI
231.526.6201 | www.staffords.com

Terrace Inn Bed & Breakfast
1549 Glendale Rd., Petoskey, MI
800.530.9898 | www.theterraceinn.com

This is the year to shop outside the box!



More than ever before, artists, arts organizations and Michigan-owned businesses need your support.

Where you shop really does matter. Not only does 68% of every dollar you spend at a locally-owned business stay within the community, but you'll find the coolest, most imaginative gifts ever when you shop downtown.

16 HANDS specializes in gifts and home furnishings with conscience and soul. That, combined with our helpful staff, on-site shipping, parking validation and *free gift wrapping* are guaranteed to make your shopping experience a fun and rewarding one.

don't miss the **Godzilla Window Display Contest** in downtown Ann Arbor
Nov 13 - Dec 2
• the **Godzilla SALE**
Nov 13 - Nov 20

Visit us online & become a fan on Facebook

16 HANDS
216 S. Main, Ann Arbor, MI 48104
734-761-1110
16HANDSGALLERY.com



Brighten Up The Holiday

ABRACADABRA

205 E LIBERTY ST. ANN ARBOR
734-994-4848 WWW.ABRAGEM.COM

EXTENDED HOLIDAY HOURS
CLOSED DEC 25TH-JAN 5TH

A2ct
Ann Arbor Civic Theatre

9 Reel to Reel
from film to the stage

9 Picasso at the Lapin Agile
Lydia Mendelssohn Theatre
November 19-22, 2009

10 Nine
Lydia Mendelssohn Theatre
January 14-17, 2010

10 The Hound of the Baskervilles
Arthur Miller Theatre
March 11-14, 2010

10 The Laramie Project
Arthur Miller Theatre
May 6-9, 2010

10 How to Succeed in Business Without Really Trying
Lydia Mendelssohn Theatre
June 10-13, 2010

ann arbor civic theatre
for more info: 734.971.2228 | www.a2ct.org

THEATRE TICKETS MAKE GREAT GIFTS!

UGG
australia

Van Boven
SHOES

17 Nickels Arcade
Ann Arbor, MI 48104
Ph: 734.665.7240
www.vanbovenshoes.com

uggaustralia.com

The Lens of IMPRESSIONISM

Photography and Painting Along the Normandy Coast, 1850-1874

By ASM Staff

If you haven't found the time yet this year to visit the University of Michigan Museum of Art (UMMA) and see their new landmark 53,000-square-foot Maxine and Stuart Frankel and the Frankel Family Wing that opened in March—more than doubling the museum's exhibit space—look no further for your reason to go.

UMMA presents *The Lens of Impressionism: Photography and Painting Along the Normandy Coast, 1850-1874*, a stunning exhibition of rare works of art and important new scholarship brought together to explore the provocative relationship between photography and painting along the Normandy coast in mid-19th-century France. The exhibition is on view in Ann Arbor through January 3, 2010 and will travel to the Dallas Museum of Art in 2010.



Claude Monet, The Sea at Le Havre, 1868, oil on canvas, Carnegie Museum of Art, Pittsburgh, Pennsylvania (Purchase 53.22)



Gustave Courbet, The Wave (La Vague), 1869, oil on canvas, Musée Malraux, Le Havre

This exhibition advances a new argument for the origins of what was called “the new painting,” namely that a unique convergence of forces—social, artistic, technological and commercial—along the Normandy coast of France dramatically transformed the course of photography and painting (as well as of the region itself). Within this framework, the invention of the camera and the development of early fine art photography in that particular setting will be seen as the specific catalysts that brought about a new approach to painting.

The project showcases paintings, photographs and drawings by some of the most treasured artists in the Western canon—Gustave Courbet, Édouard Manet, Claude Monet and Edgar Degas among them—as well as pioneering photographers such as Gustave Le Gray and Henri Le Secq. Inspired by the scenic Normandy coast of France, these works—including representations of beach scenes, seascapes, fishing villages, resorts and the region's pastoral beauty—will be brought together with archival materials related to early tourism and regional expressions of French nationalism from popular culture for an innovative examination of the impact of the then-new medium of photography on ideas of image making, the recording of passing time, the capacities of painting and the rise of Impressionism itself.



Henri Le Secq, Dieppe, Fishing Boats at Low Tide (*Dieppe, bateaux de pêche à sec*), ca. 1854, modern salted paper print from original paper negative, Department of Prints and Photographs, Bibliothèque nationale de France, Paris.

The exhibition will include pieces on loan from private and public collections in both the United States and Europe, featuring exceptional loans from the Musée d'Orsay and a generous loan of outstanding photographs from the rich collections of the Bibliothèque nationale de France. It will also be accompanied by a fully illustrated book with essays by internationally recognized scholars: Sylvie Aubenas, Head, Department of Prints and Photographs at the Bibliothèque nationale de France; Dominique de Font-Réaulx, Curator, Musée du Louvre; Stephen Bann, Bristol University; Dean MacCannell, University of California at Davis; and UMMA's Senior Curator of Western Art, Carole McNamara.

A varied slate of programming designed to accompany and interpret the exhibition includes a series of musical performances featuring the faculty and students of the University of Michigan's renowned School of Music, Theatre, and Dance; major lectures by Carole McNamara, Stephen Bann and Jane Fulcher, UM musicology professor; and drop-in seascape painting workshops for families. For more details, call 734.763.UMMA, or visit UMMA's website at www.umma.umich.edu.

UMMA is located at the gateway to the University of Michigan's central campus, at the intersection of South State and South University. All galleries throughout the Museum are open during the following hours: Tuesday, Wednesday and Saturday from 10 am–5 pm; Thursday and Friday 10 am–10 pm; and Sunday from 12–5 pm. Select public areas within the Maxine and Stuart Frankel and the Frankel Family Wing, including the Commons and the Forum, are open to the public daily from 8 am–12 pm. The Museum is closed on Mondays, Thanksgiving Day, Christmas Day, and New Year's Day. Admission to the Museum is always free, however a \$5 suggested donation is appreciated. [ASM](#)

FOUND Whimsical Art, Vintage Treasures, Fun Finds!

Hand-picked Gifts & Festive Holiday Decor from Found & Recycled Materials

Located in the Historic Kerrytown District
407 N 5th Avenue, Ann Arbor, MI
734.302.3060 | foundgallery.com

Emerald Dragonfly and **Treasure Mart**

Welcome you to Visit the Kerrytown Shopping District this Holiday Season

<p>Emerald Dragonfly 419 Detroit Street Ann Arbor, Mi 734-997-7880</p> <p>M-F 10:00-5:30 S-10-3</p> <p>www.emeralddragonflyonline.com</p>	<p>Treasure Mart 529 Detroit Street Ann Arbor, Mi 734-662-1363</p> <p>M-F 9:00-5:30</p> <p>www.treasuremart.com</p>
--	--

Art Lovers in LANSING

What to Do in the State Capital Besides Going to a Spartan's Game

By Sandra Xenakis

An eerie, dog-like creature with the head of a man crouches under the trees outside clay sculptor Mark Chatterley's studio. Stepping into the studio, we're surrounded by eight-foot-tall, rough textured figures that resemble stone or rusted metal. Chatterley builds his sculptures from the ground up, working on 12 figures at once, adding a little clay each day. Several of the figures crowd the room-size kiln, waiting to be fired. Chatterley's sculptures have been installed solo and in groupings, inside and outside museums, public and corporate buildings, colleges, and private collections all over the world.

Chatterley's studio is in Williamston, east of Lansing. While most visitors to the Lansing area take in a Michigan State football game or a tour of the state capitol building, few know about the rich variety of art galleries and studios nearby.

They're missing something extraordinary.

If you want to spend a stimulating weekend exploring the arts, start at Michigan State's campus in East Lansing. Plan to stay overnight at the East Lansing Marriott at University Place or the Wild Goose Inn B&B. Both are within a few blocks' walk of the university, galleries, restaurants, and shops. Wild Goose offers made-to-order omelets, fresh fruit, and home-made muffins to die for.

Wandering around campus, you'll notice monumental abstract sculptures in steel and reinforced concrete by Mel Leiserowitz, who taught sculpting at MSU for 30 years. His 35-foot steel "Orpheus" at the Wharton Center is a landmark. Retired since 1991, Leiserowitz now works in a much smaller format, primarily in clay. I love his wall sculpture of figures in everyday poses, one sitting in a wheelchair, others waiting in line for a bus.

Nancy Leiserowitz, Mel's wife, has built her reputation with larger-than-life, figurative bronzes, found at numerous Lansing public buildings, museums, and MSU locations. Her commis-



Photo by Roger Smith

Clay sculptor Mark Chatterley works tirelessly in his Williamston studio shaping life-sized pieces, specializing in human forms.

sioned work includes cast bronze busts of famous people or clients' loved ones. Contact either Mel or Nancy directly to see their work.

Just north of campus is downtown East Lansing. Mackerel Sky Gallery on Ann St. Plaza was named one of the Top 25 Galleries of American Craft by Niche magazine in 2006. Here you'll find functional art that's well-designed and earth-friendly, including glass, ceramic, wood, and metal products for the home, recycled paper products, art jewelry, and stuffed toys of recycled sweaters. Among the wearable fiber art is elegant, 100% cotton knitwear from Chris Triola. A painter by training, Triola paints the roots and grasses along Lake Michigan and inputs the images into her computerized knitting machines, resulting in luscious textures and graphics.

Periodically, Mackerel Sky also carries children's books illustrated by Kate Darnell, plus her detailed, six-inch paintings of string, stones, and other familiar objects viewed from a unique perspective. And don't miss the capricious acrylic paintings and clay "fairy houses" by Barbara Hranilovich, her "way of inviting joy into a world where people currently seem focused on the negative."

A block away is Saper Galleries, which has won awards from Art Business News and Décor Magazine. Owner Roy Saper buys pieces from the "best artists around the world," offering 1,500

works for sale. Huge skylights filter out ultraviolet rays, allowing us to view the art in natural light. Among the artists represented are Kathleen Chaney Fritz and Barbara McCleary, who both paint “en plein air” (outside). Fritz paints Great Lakes shoreline scenes, while McCleary depicts glowing ponds and wetlands. In contrast, landscape artist Michael Callihan often paints in his studio at night, creating large canvases from imagination and his memories of a rural Michigan childhood. Indistinct edges and the interplay of light lend a dreamlike quality to his work.

That evening, my friends and I enjoy a great beer selection and authentic Irish food at the Dublin Square Irish Pub on Abbott, a five-minute walk from the Marriott. Originally a post office, the 1934 rough brick building features a huge, mahogany bar hand-carved in Dublin. We’re surprised to find a small smoking room behind the bar. The room’s high ceiling and ventilation system keep smoke out of the other areas—no mean feat for a pub.



At left: An example of the wearable fiber art of Chris Triola.

Below: Artist Kate Darnell creates fun six-inch paintings on blocks of wood. Available at Mackerel Sky Gallery in East Lansing.



The next morning, we drive to downtown Lansing. A few blocks from the capitol building, on Washington Square, is the Lansing Art Gallery, the city’s oldest non-profit gallery. The second floor houses creative and sometimes provocative exhibits on social discourse and the arts. On the main floor we see ceramics by Deb Oliva, who brings a designer’s eye to her porcelain bowls, plates, teapots, and jars. Known for her experimentation with glazes, Oliva is currently the glaze chair at the Greater Lansing Potters’ Guild. (Take in the Potters’ Guild annual Fall Show in Haslett, Nov. 12-14.)

We meet jeweler Debbie Fehrenbach, an avid scuba diver, who takes her inspiration for fused metal jewelry from the underwater worlds of the ocean. Mark Mahaffey traditionally paints watercolor and acrylic landscapes, but a recent series, based on his first trip to New York City, features the vivid hues of taxis, people, and street scenes. Doug Delind plays with faces and textures in his large, raku sculptures, using everyday objects like chopsticks, combs, and ravioli for surface effects. Look closely at Steve Klein’s exquisite, hand-carved boxes and furniture of domestic and exotic woods, and you’ll notice each joint is held together by hand-cut mortise and tenon, or tiny, diamond-shaped, ebony pegs.

Just down the street is Tavern on the Square, the perfect place for lunch. Dark wood, Revolutionary War prints, and an outrageous chandelier dominate the interior. Sandwiches and salads are good, but the desserts are downright sinful. We can’t resist trying the hot donuts with homemade applesauce. Be forewarned—this is major sugar rush territory!

You should not leave the Lansing area without seeing the abstract painting of Irving Zane Taran. Known as one of the “Color Field” painters of the sixties, Taran has continued exploring abstractions inspired by weather, refraction, and reflected color in large bodies of water or sky. His paintings range in size from 25 inches to



Above: Basket Series Teapot III by ceramicist Deb Oliva. **Below:** Beautiful Eclipse bracelet by jeweler Debbie Fehrenbach. See more from these artists and many others at Lansing Art Gallery.



ten feet and start at \$2,400. Several of them are in permanent collections on MSU’s campus, including the Kresge Art Museum.

Taran currently works with special acrylic paint similar to that used on auto bodies, squee-geeing it on huge canvases with ten-foot blades he makes himself. In the paint is a platelet that allows two colors to ride on it simultaneously, creating a depth and luminosity I’ve never seen before. Some colors

[more>>>](#)



Amazing glass sculptures like this piece by Craig Mitchell Smith adorn the property at his home studio in Lansing.

bleed through others, and the heavy layers of paint create peaks and canyons reminiscent of a strange planetary surface. Call him directly to arrange a visit to his East Lansing studio.

A few days before your trip, contact glass sculptor Craig Mitchell Smith and arrange a visit to his Lansing home studio. The one-acre, hilltop garden behind Smith's house offers winding pathways, dozens of abstract glass sculptures in flowing, organic shapes, and 172 varieties of hostas. The beauty of this place seems magical, and it just may be. The day before our visit, 70-mile-per-hour winds

swept through, snapping a tree but leaving the glass pieces undamaged! Smith's work will be featured at the first winter exhibition of glass at Dow Gardens, Midland, Dec. 23-Feb. 27.

After feeding our souls on all that beauty, we need to indulge in a meal at Dusty's Wine Bar in Okemos, where "New World" cuisine mixes Caribbean spices with meat, seafood, and Michigan products in unusual and delicious ways. After dinner, we browse the cellar with its amazing selection of hundreds of wines, finding a favorite Merlot to add our art purchases. What could be a more fitting end to a perfect art weekend in Lansing?

ART LOVERS IN LANSING TRAVEL RESOURCE LIST

Michigan Economic Development Corp.
Travel Michigan
(888) 784-7328 | www.michigan.org

Greater Lansing Convention and Visitors
Bureau
(517) 487-0077 | www.lansing.org

EAST LANSING ART

Mackerel Sky Gallery
217 Ann Street Plaza
(517) 351-2211 | www.mackerelsky.com

Saper Galleries
433 Albert Avenue
(877) 537-5251 | www.sapergalleries.com

Irving Zane Taran
1107 Woodingham Drive
(517) 351-2703

LANSING ART

Lansing Art Gallery
113 S. Washington Square
(517) 374-6400 | www.lansingartgallery.org

Craig Mitchell Smith
1908 Briarwood
(517) 420-3721 | www.craigmitchellsmith.com

Mel and Nancy Leiserowitz
(517) 676-5108
www.msu.edu/~leisero1/index.html

ART IN NEARBY COMMUNITIES

Mark Chatterley
231 Turner Road, Williamston, MI 48895
(517) 655-4012 | www.chatterley.com

Greater Lansing Potters' Guild
8099 Coleman Road, Haslett, MI 48840
(517) 339-8978 | www.glpjg.org

LANSING AREA LODGING

East Lansing Marriott at University Place
300 M.A.C. Avenue
(517) 337-4440 | www.marriott.com

Wild Goose Inn Bed & Breakfast
512 Albert Avenue, E. Lansing, MI 48823
(517) 333-3334 | www.wildgooseinn.com

LANSING AREA DINING

El Azteco
225 Ann Street, E. Lansing, MI 48823
(517) 351-9111

Dublin Square Irish Pub
327 Abbott Road, E. Lansing, MI 48823
(517) 351-2222 | www.dublinsquare.net

Tavern on the Square
206 S. Washington Square, Lansing, MI 48933
(517) 374-5555 | www.tavernonthesq.com

Dusty's Wine Bar
1839 Grand River Avenue, Okemos, MI 48864
(517) 349-5150 | www.dustyscellar.com

Go to www.ArtShowcaseMagazine.com for an even more comprehensive *Calendar of Events*.

VISUAL ART

U-M MUSEUM OF ART (UMMA)

Thru Dec. 6.

(Un)Natural History: The Museum Unveiled

Richard Barnes's series of photographs *Animal Logic Images* include photographs of the collections from the Smithsonian Institution, the Museum of Comparative Anatomy in Paris, the Canadian Museum of Natural History, and the San Francisco Academy of Science.

Thru Jan. 3.

The Lens of Impressionism: Photography and Painting Along the Normandy Coast, 1850-1874. This exhibition advances a new argument for the origins of what was called the "new painting," namely that a unique convergence of forces along the Normandy coast of France dramatically transformed the course of photography and painting.

Thru Jan. 17.

UMMA Projects: Heather Rowe

Rowe's art sits precariously at the intersection of sculpture, architecture, and installation.

Admission to the Museum is free. \$5 suggested donation is appreciated. 525 S. State St., Ann Arbor; 734.764.0395, www.umma.umich.edu.



Reopened Nov. 1 THE KELSEY MUSEUM

Housing a collection of nearly 100,000 ancient and medieval objects from the civilizations of the Mediterranean and the Near East, the newly renovated museum displays a selection of these artifacts in

the new William E. Upjohn Exhibit Wing. An Egyptian mummiform coffin (685-525 BC) of the priest Djehutymose is on view in the new wing. The Kelsey Museum of Archaeology, 434 S. State St., Ann Arbor. 734.764.9304, www.lsa.umich.edu/kelsey.

Thru Nov. 13

ROBERT & SHANA PARKEHARRISON
The highly esteemed photographers exhibit a

selection of their recent work. Lecture 5pm, Nov. 12 at the Michigan Theater. Admission is free. Jean Paul Slusser Gallery 2000 Bonisteel Blvd Ann Arbor. 734.936.2082, www.slussergallery@umich.edu.

Thru Nov. 15

MATERIAL MATTERS

An exhibition of new work and site-specific installations featuring Larry Cressman and Susan Crowell. River Gallery, 120 S. Main St., Chelsea; 734.433.0826, www.chelsearivergallery.com.

Thru Nov. 22

2009 INSTRUCTOR AND STUDENT SHOW

Featuring two and three-dimensional works. Ann Arbor Art Center. 117 W. Liberty St.; 734.994.8004, www.annarborartcenter.org.

Thru Nov. 28

Reception Nov. 6, 7-9pm

FROM OUR HANDS TO YOURS...

25 YEARS OF CLAY

Featuring new work by current and past members, celebrating the 25th year of the cooperative gallery. Clay Gallery 335 S. Main St., Ann Arbor; 734.662.7927, www.claygallery.org.

Thru Nov. 30

FLIGHT

Twelve artists give us their interpretation of birds. The Side Door Gallery (inside The Dexter Picture Frame Co), 8063 Main St., Dexter; 734-426-1581, www.thesidedoorgallery.com.

Thru Dec 4

THE FOUR CORNERS

Printmaking by Takeshi Takahara

U-M Residential College Gallery, 701 E. University Ave, Ann Arbor; www.rc.lsa.umich.edu.

Thru Dec. 6

FIGURES AND SPACES

by Nora Venturelli

WSG Gallery (formerly Washington Street Gallery) 306 S. Main St. bet. Liberty and William in Ann Arbor; 734.761.2287, www.wsg-art.com.

Thru Dec 6

CAPTURING MOTION

A multi-media exhibition featuring 20 local, regional and national artists including two of America's leading creators of kinetic art—Arthur Ganson from Cambridge (MIT) and TRIMPIN from Seattle. Gallery Project, 215 S. Fourth Ave., Ann Arbor; 734.997.7012, www.thegalleryproject.com.

Thru Dec. 11

MEANWHILE

Colorful and exciting works by Professor Jim Cogswell, professor of Art at UM School of Art and Design. Reception Nov. 11, 4:30-6pm. Lecture to follow. GalleryOne Student Center Building, 1st floor, Washtenaw Community College campus, 4800 E. Huron River Dr. Ann Arbor; 734.477.8512, www.wccnet.edu.

Nov. 9 - Dec. 19

Reception Nov. 9, 4-7pm

ENERGY: Charles McGee at Eighty-Five

A sixty-year retrospective will document all phases of his work. McGee's work is in hundreds of museums, galleries, art centers, and private collections in Michigan and throughout the U.S. Ford Gallery at Eastern Michigan University; 734.487.0465, www.emich.edu/fordgallery.



Nov. 14

Reception 6-9pm

CELEBRATE

Featuring native Chelsea Artist Jan Dorer, an extraordinarily talented acrylic painter who has been perfecting her art for over four decades. 115 S. Main St. Chelsea; 734.475.1008, www.chelsea-gallery.com.

Nov. 14

SALINE CRAFT SHOW

The Saline Craft Show, in its 22nd year, is rated as one of the top 10 shows in Michigan. 8-3:30, \$3 admission. Saline Middle School, 7190 N. Maple Rd, Saline; 734.429.5922.

Nov. 16 thru Jan. 22

Opening Reception Dec. 3, 6-8 pm

BOOK OF ITERATIONS, Pippa Skotnes

The exhibition maps out the imaginary boundaries and landmarks of the miraculous history of the book. UM Institute for the Humanities Gallery. 202 S. Thayer St., Ste. 1111, Room 1010, Ann Arbor; 734.936.3518, www.lsa.umich.edu/humin.

[more>>>](#)

Nov. 22

HOLIDAY ARTISANS MARKET

Jewelry, crafts, fine art & baked goods. 1-5pm. Free admission. Jewel Heart Tibetan Buddhist Learning Center, 1129 Oak Valley Dr. near Ellsworth; 734.994.3387, www.jewelheart.org.

Dec. 5

SHADOW ART FAIR

50 artists. One evening, noon to midnight. Corner Brewery, 720 Norris St. at Forest, Ypsilanti.

Dec. 5 & 6

ANNUAL POTTER'S GUILD SALE

Sat-Sun 10-5. Located at 201 Hill St., Ann Arbor; 734.663.4970, www.pottersguild.net.

Dec. 4-18

BBAC HOLIDAY SHOP

Fourteen days of artful gifts, including fiber, jewelry, ceramics, wood, home décor, handmade children's wear, ornaments, glass and paintings to benefit the Birmingham Bloomfield Art Center. Free. Mon-Sat 10am-6pm, Sun. Noon-4pm. 1516 S. Cranbrook Rd. (Evergreen Rd.), Birmingham; 248.644.0866, www.BBArtCenter.org.

THEATER & DANCE



**Thru Jan 23
ESCANABA**

A world premiere by Jeff Daniels. Directed by Guy Sanville. This original story reveals the role a strange trespasser plays in time-honored Soady Deer Camp traditions, including the saga of the Soady Ridge Buck. Wed-Fri at 8, Sat at 3 & 8, Sun at 2. Tickets \$25-\$38. The Purple Rose Theatre, 137 Park St., Chelsea; 734.433.7673, www.purplerosetheatre.org.

Nov. 19 - Dec. 27

CHRISTMAS CAROL'D

Five actors play over forty roles in this fast-paced, gleefully inventive new adaptation. Thurs, Fri & Sat - 8pm, Sun - 2pm. Sat matinees on Dec 5 & 19 at 3 p.m. Tickets \$27-\$41 Performance Network Theatre, 120 East Huron St., Ann Arbor; 734.663.0681, www.performancenetwork.org.

Nov. 19-22

DANCE BFA CONCERT: HAPPEN-CHANCE ON A BLANK BODY

An evening-length performance featuring the works of four senior dance majors with original music, poetry and text. 8pm. Free. Betty Pease Studio Theater, North Campus, Ann Arbor, www.events.umich.edu.



Nov. 19-22

PICASSO AT THE LAPIN AGILE

Presented by the Ann Arbor Civic Theatre. Set in a Parisian bar, the Lapin Agile, this outrageous comedy finds young Pablo Picasso and young Albert Einstein musing on art, science, fame, and fortune. Thur thru Sat -8pm. Tickets \$10-\$18. At the Lydia Mendelssohn Theatre in the historic Michigan League, Ann Arbor. Info: 734.971.2228, www.a2ct.org.

Dec. 4

STRAVINSKY AND THE DANCE

Lecture/Discussion by the Research in Action Colloquium. A panel of Dance-Music scholars discuss Igor Stravinsky's contribution to 20th/21st Century dance. Free. Betty Pease Studio, 1310 N. University Court, Ann Arbor, www.music.umich.edu.

Dec. 10-13

MACBETH

What happens when ambition eclipses civility? William's Shakespeare's classic tragedy about one couple's decent into evil in the pursuit of power. Presented by UM Dept. of Theatre & Drama. Thurs at 7:30, Fri & Sat at 8, Sun at 2. Tickets \$18-\$24. League Ticket Office 734.764.2538. Power Center for the Performing Arts, Ann Arbor. Info: www.music.umich.edu.

Dec. 18, 19, 20

THE NUTCRACKER BALLET

Ann Arbor Ballet Theatre's 25th Anniversary. Fri. 8pm (benefit performance for the Humane Society of Huron Valley) Sat. 2 & 8pm, Sun at 2. Power Center for the Performing Arts, Ann Arbor; 734.763.TKTS, www.AnnArborBalletTheatre.org.

MUSIC

Nov 10

MAVIS STAPLES

With her signature contralto and inspiring blend of compassion and steadfast protest, legendary R & B/Gospel singer Mavis Staples' performance in Ann Arbor kicks off a 5-day series of fundraising events for Avalon Housing, Inc. 7pm. Tickets: \$25 -\$75 thru Ticketmaster or call 800.745.3000. Michigan Theater, 603 E. Liberty, Ann Arbor, www.avalonhousing.org.

Nov 12-15

THE MARRIAGE OF FIGARO

Music by Wolfgang Amadeus Mozart. University Opera Theatre. Called "the world's most perfect opera," The Marriage of Figaro has delighted audiences since its premiere in 1786. Tickets: 734.764.2538. Power Center for the Performing Arts, 121 Fletcher St. Ann Arbor, www.music.umich.edu.

Nov 13

ENSEMBLE CHACONNE - Measure for Measure: Songs from Shakespeare's Plays

Ensemble Chaconne transports the audience to Shakespeare's time. Hailed by The Portland Press Herald as "the perfect Elizabethan evening." 7:30pm. Tickets: \$15, \$10 for students/seniors. Chapel of the Holy Trinity, Concordia University, 4090 Geddes Rd., Ann Arbor. Tickets call 734.995.4612 or www.cuaa.edu/kreftarts.

Holiday event titles in red.



Nov 14
YASMIN LEVY
A world music superstar, Levy preserves and revives the beautiful sounds from the L a d i n o / J u d e o - Spanish heritage, mixing them with A n d a l u c i a n Flamenco. Sat. 8pm. Hill Auditorium, Ann Arbor, Tickets: 734.764.2538, www.ums.org.

Nov. 14
BRAHMS AND FRIENDS
Prokofiev, Bizet and Brahms, presented by the Ann Arbor Symphony Orchestra. Sat at 8pm. Tickets: \$24.50-\$49 By phone at 734-994-4801 or online at a2so.com. Michigan Theater, 603 E. Liberty, Ann Arbor, www.a2so.com.

Nov 17
BERLIN PHILHARMONIC
Considered one of the world's finest orchestras, under the leadership of Sir Simon Rattle. Program includes Brahms and Schoenberg. Tues. at 8pm. Hill Auditorium, Ann Arbor, Tickets: 734.764.2538, www.ums.org.

Nov 20
PATTI LUPONE
Coulda, Woulda, Shoulda. Toni award-winning star and the original Evita, Patti takes the audience on a high-spirited tour of Broadway songs and roles. Fri. 8pm. Hill Auditorium Ann Arbor, Tickets: 734.764.2538, www.ums.org.

Nov 27
DAVID ARCHULETA: CHRISTMAS FROM THE HEART WITH THE A2SO
The American Idol Finalist teams up with our very own Ann Arbor Symphony Orchestra. Fri. 8pm. Hill Auditorium, Ann Arbor, 734.994.4801, www.a2so.com.

Nov 28
JEFF DANIELS & FRIENDS
This is the third annual holiday tradition of Daniels showcasing Michigan musicians. Sat. 8pm. Tickets: \$22.50, \$37.50, \$75. Ticketmaster outlets and the Michigan Union Ticket Office. 734-763-TKTS or (800) 745-3000. Michigan Theater, 603 E. Liberty, Ann Arbor.

Nov 29
VIENNA BOYS CHOIR
This Thanksgiving weekend performance, entitled Christmas in Vienna, is the perfect way to launch the holiday season. Sun. 4pm. Hill Auditorium Ann Arbor, Tickets: 734.764.2538, www.ums.org.

Nov 30
GEMINI & FRIENDS THANKSGIVING FAMILY CONCERT
A benefit for Mott's Children's Hospital. With the multi-generational Good Mischief Band. Sun. 1pm. Tickets \$10. The Ark, 316 S. Main, Ann Arbor; 734.763.8587, www.theark.org.

Dec 4, 5 & 6
ANNUAL BOAR'S HEAD FESTIVAL
A medieval Christmas enactment of a traditional story of Christ's birth. This moving spectacle has become a treasured memory for many, now in it's 32nd year. Fri & Sat -7:30pm, Sun at 4. Tickets \$8-\$15. Chapel of the Holy Trinity, Concordia University, 4090 Geddes Rd., Ann Arbor. Tickets call 734.995.4612 or www.cuaa.edu/kreftarts.

Dec 5-6
HANDEL'S MESSIAH
The Grammy Award-winning UMS Choral Union and A2SO celebrate the holiday season in this annual Ann Arbor tradition. Sat. 8pm, Sun 2pm. Hill Auditorium, Ann Arbor, Tickets: 734.764.2538, www.ums.org.

Dec 6
THE CHRISTMAS SHIP CONCERT
Lee Murdock brings his boundless body of music and stories about the Great Lakes to the Ark. This holiday show commemorates the turn-of-the-century tradition of carrying Christmas trees to Great Lakes port cities. Sun 7:30. Tickets \$15. The Ark, 316 S. Main St., Ann Arbor; 734.763.8587, www.theark.org.

MICHIGAN THEATER
Ann Arbor's downtown center for fine film and the performing arts.
603. E. LIBERTY ST • (734) 668-TIME
MICHTHEATER.ORG

THE KREFT ARTS PROGRAM
Measure for Measure
Songs from Shakespeare's Plays



Ensemble Chaconne
Friday, November 13, 7:30 p.m.
Chapel of the Holy Trinity
Tickets: \$15 (\$10 seniors and students)
For full details on this & other events go to www.cuaa.edu/kreftarts

CONCORDIA UNIVERSITY
Ann Arbor, Michigan
4090 Geddes Road • Ann Arbor, MI 48105
Located just west of US-23 at Exit 39

Dec 8
A CALYPSO CHRISTMAS
What could be better, just as the weather in Michigan turns cold, than to celebrate the season tropical-style with the exuberant sounds of the Trinidad Tripoli Steelband? Tues. 8 pm. Tickets \$15. The Ark, 316 S. Main St., Ann Arbor; 734.763.8587, www.theark.org.

[more>>>](#)

Dec 11

CONCORDIA CHRISTMAS CONCERT

A program of holiday music. 7:30pm. Free. Chapel of the Holy Trinity, Concordia University, 4090 Geddes Rd., Ann Arbor. Info: 734.995.4612 or www.cuaa.edu/kreftarts.

Dec 12

JEAN-YVES THIBAUDET

Considered as one of the great pianists of our time. Sat. 8pm. Hill Auditorium, Ann Arbor, Tickets: 734.764.2538, www.ums.org.

Dec 12

SING ALONG WITH SANTA

An annual holiday favorite! Sing your heart out with the Ann Arbor Symphony Orchestra! Sat, 4pm. Tickets call 734.994.4801. Bethlehem United Church of Christ, 423 S. 4th Ave., Ann Arbor, www.a2so.com.

Dec 13

A CHRISTMAS CAROL: COMMUNITY READ-ALONG

Sign up to read a part in Concordia English Professor, Mark Looker's adaptation of Dickens' own reading script of the classic Christmas story. 3pm. Free. Earhart Manor Living Room at Concordia University. Contact lookerm@cuaa.edu for more information.

Dec 17

CHRISTMAS THE COWBOY WAY

Riders in the Sky present an off-the-wall Western-style Christmas show. Thurs. 8pm. Tickets \$20. The Ark, 316 S. Main St., Ann Arbor; 734.763.8587, www.theark.org.

Dec 17

HOME FOR THE HOLIDAYS: POPS AT THE PENN

Two yuletide pops concerts at the historic Penn Theatre in downtown Plymouth. An early family seating and a 2nd show at 8pm. Thurs. 6pm, Family Holiday Pops for the younger set; 8pm, Annual Holiday Pops. For tickets, call 734.451.2112; Penn Theatre, 760 Penniman Ave. Plymouth, www.plymouthsymphony.org.

Dec 31

NEW YEAR'S EVE WITH THE CHENILLE SISTERS

Ring in the New Year with this popular local group. 10pm, doors open at 9pm. Tickets \$35. The Ark, 316 S. Main St., Ann Arbor; 734.763.8587, www.theark.org.

OTHER EVENTS

Nov 13 & 14

HOLIDAY OPEN HOUSE AT EMERALD DRAGONFLY

Artisan and unique gift items with a focus on nature. 419 Detroit St., Ann Arbor, across from Zingerman's Deli. Info and hours: 810.444.7257.

Nov 13

SAVE A HEART CELEBRATION OF WINE AND FOOD

More than 100 wines will be available for tasting from around the world, along with food samples from Ann Arbor restaurants. The event will also feature a silent auction and live music. Benefit for the UM Congenital Heart Center at C.S. Mott Children's Hospital in Ann Arbor. 6:30pm. Tickets: \$60 in advance, \$75 at door. Michigan League, 911 N. University, Ann Arbor, 734.936.9134.

Nov 15

KERRYTOWN SHOPS OPEN HOUSE

Sun. 11-6pm. 407 N. Fifth Ave., Ann Arbor, www.kerrytown.com.

Nov 20 & 21

NORTHVILLE HOMETOWN HOLIDAYS

Northville welcomes Santa to town with a parade full of lights, sparkle and music. Enjoy free cider, coffee, hot chocolate and treats along with festive activities. Info: 248-349-7640 or www.downtownnorthville.com.

Nov 25

BIRMINGHAM TREE LIGHTING

Help Santa light up the town for the Holidays. Live caroling, free hot cocoa and the opening of Santa House. Info: 248.530.1200 or www.enjoybirmingham.com.

Dec 4

MIDNIGHT MADNESS

Downtown Ann Arbor and Kerrytown Area merchants offer special sales, while strolling musicians and holiday lights make for a fun and festive evening. Fri. 10am -midnight, www.mainstreetannarbor.org, www.kerrytown.com.

Dec 4 & 6

CHELSEA HOMETOWN HOLIDAYS

Downtown Chelsea will be decked out in holiday splendor to warm your hearts and your spirit. Browse the unique shops and attend the many special events planned to capture the spirit of the holiday season. 734.475.1145, www.chelseafestivals.com.

Dec 5

34th ANNUAL SALINE HOLIDAY PARADE

Enjoy Santa's Village immediately following Parade at the former Methodist Church, 117 S. Ann Arbor St. Additional Activities to be announced. 5:30pm. www.salinechamber.com



Dec 12

SING-ALONG WHITE CHRISTMAS

If you've ever wanted to break out in song during a film musical, here's your chance. Attend the Sing-Along version of White Christmas. Yes, you can sing right along with Bing Crosby, Danny Kaye, Rosemary Clooney and Vera Ellen in the campy 1954 romantic comedy. Lyrics are provided onscreen and theatergoers receive a package of props to participate with the audience en masse. Film time TBA. Michigan Theater, 603 E. Liberty, Ann Arbor, www.michtheater.org.

Dec 12 & 13

1930s' CHRISTMAS ON THE RENTSCHLER FARM

Natural Decorations, Gift Shop & Refreshments. Sat. noon-5pm, Sun. 1-4pm. Rentschler Farm Museum, 1265 E Michigan Ave., Saline. www.salinechamber.com.

Dec 13

IT'S A WONDERFUL LIFE

Part of the Holiday Classics Film Series. Admission is FREE! Starring Jimmy Stewart and Donna Reed. 1946. Rated G. 130 minutes. Sun. at 4pm Michigan Theater, 603 E. Liberty, Ann Arbor, www.michtheater.org.

Dec 31

NEW YEAR'S EVE AT WEBER'S INN

A sell-out for 27 consecutive years. Purchase your New Year's Eve package by November 30 and receive a gift certificate for Weber's Inn. Call 800.443.3050 or visit www.webersinn.com for more details.

Send your calendar submissions to: Calendar@ArtShowcaseMagazine.com.

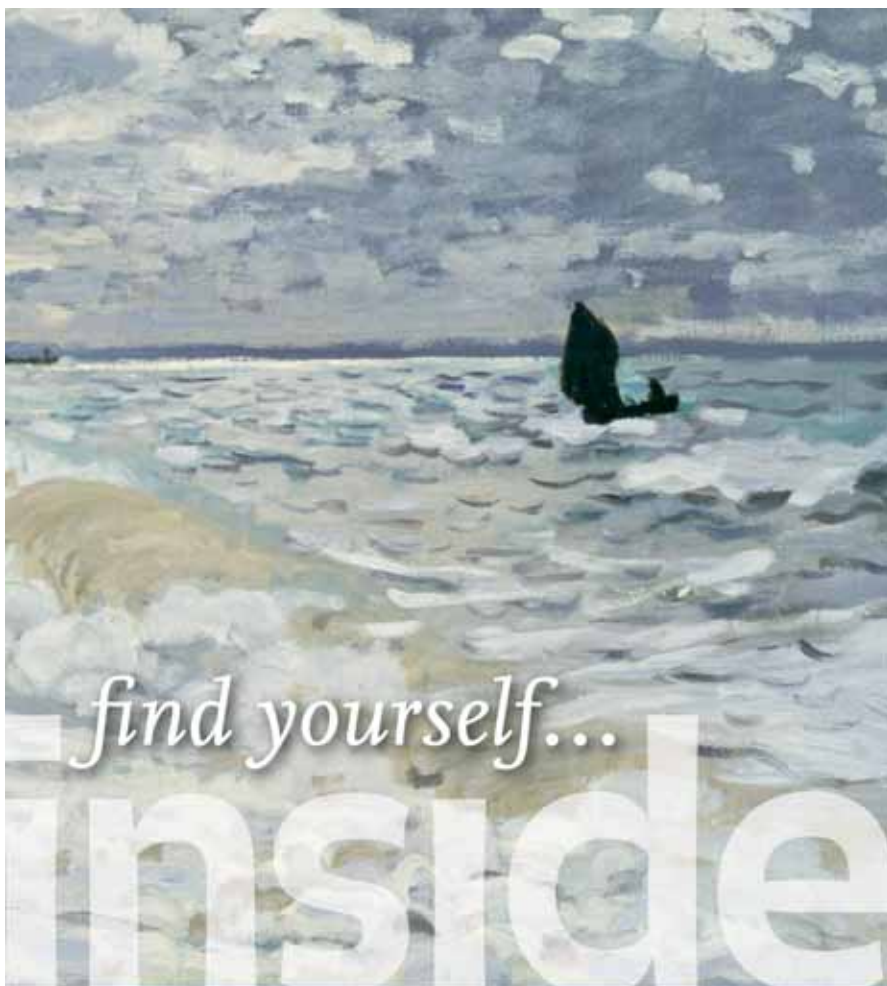
Concordia University's Boar's Head Festival



With its unique and spacious pyramid-like architecture, the Chapel of the Holy Trinity at Ann Arbor's Concordia University, decorated to remind visitors of a 14th century dining hall, inspires a sense of reprieve from the jangling exertion of daily life, and sets the mental stage for an often transcendent celebration—*The Boar's Head Festival*. Soon musical director, Brian Altevogt, leads the Concordia Choir and accompanying musicians in three musical selections, followed by words of welcome from festival director, Guest Artist in Theatre Robert Bethune and instructions for the Latin pronunciation of the Boar's Head Carol refrain. Audience participation is encouraged.

Over sixty performers bedecked in ornate medieval costumes enter the chapel, filling it with an hour and fifteen minutes of continuous musical storytelling. They bear a boar's head, the ancient symbol of Christ's Advent and triumph over sin. The traditional story of the nativity is woven into the world of the earthly King Wenceslas, who, in the end, symbolically lays his scepter at the feet of Jesus Christ. In this powerful retelling of the Christmas story, audience members are sometimes moved to joyful tears and leave pondering the significance of time-surpassing themes steeped into this rich festival.

Tickets for the 32nd Boar's Head Festival are on sale now. Performances are December 4th and 5th at 7:30pm and December 6th at 4pm. For more information regarding Concordia University's experiential pageant of the essential Christmas experience, call the Krefl Center Box Office at 734.995.4612. [ASM](#)



The Lens of Impressionism: Photography and Painting Along the Normandy Coast, 1850–1874

Through January 3, 2010

Organized by UMMA, this exhibition is made possible in part by the Florence Gould Foundation, the National Endowment for the Arts, and the University of Michigan Health System and Office of the Provost. The project features exceptional loans from the Bibliothèque nationale de France and the Musée d'Orsay.

umma

UNIVERSITY OF MICHIGAN MUSEUM OF ART

525 South State Street, Ann Arbor
www.umma.umich.edu | Free Admission

Claude Monet, *The Sea at La Haye*, 1868, oil on canvas, 23 1/8 x 32 1/8 in. (50 x 81.6 cm),
Carnegie Museum of Art, Pittsburgh, Pennsylvania (Purchase 53.22)

MAKE IT WEBER'S ...tonight!



- Famous full-service restaurant and hotel independently operated by the Weber family
- Weber's Restaurant, famous for Prime Rib, lobster, seafood and steak
- Wine Spectator Award of Excellence
- Exciting nightlife and live entertainment at the Ventura Wine Bar and Habitat Ultralounge
- Free parking
- 4-Star hotel rated by Orbitz & Travelocity
- Featured property – "Resorts and Great Hotels Magazine"
- Beautiful Four Seasons Pool and Recreation Area
- Specialty poolside Jacuzzi® Suites
- Complimentary high-speed Internet access in all rooms and public areas
- Northwest Airlines World Perks mileage program
- Distinguished event facilities for groups of up to 500

Weber's

RESTAURANT & HOTEL

ANN ARBOR, MICHIGAN

Dinner Reservations 734-665-3636

★★★★ | Orbitz | Travelocity
ANN ARBOR'S HIGHEST RATED HOTEL

734-769-2500 ■ 800-443-3050 ■ www.webersinn.com
3050 Jackson Road ■ Ann Arbor, MI ■ I-94 at exit 172