

# artSHOWCASE

Relevant Reading for the Artistic Mind.



Travel to Tecumseh, MI and Experience Everything from Small-Town Charm to

## HEART RACING ACTION

### PLUS:

Tuning In to Music City  
Passport to the Arts:

Detroit to Indianapolis  
Michigan Glass Month  
Chasing the Chocolate Fairy  
The 49th Ann Arbor Film Festival  
Event Calendar  
Art News  
Marketplace

March | April 2011

[www.ArtShowcaseMagazine.com](http://www.ArtShowcaseMagazine.com)

2011 SPRING OPERA SEASON

# 40 SEASONS OF BOLD VISION AND SOARING VOICES.

MICHIGAN OPERA THEATRE  
David DiChiara, General Director



April 9-17, 2011  
**MAGIC FLUTE**  
Wolfgang Amadeus Mozart



Giuseppe Verdi  
May 14-22, 2011

**RIGOLETTO**



**FEATURING THE MICHIGAN OPERA THEATRE ORCHESTRA AT THE DETROIT OPERA HOUSE**

**De Roy Testimentary Foundation**  
performance sponsor for the Friday May 20, 2011 performance of "Rigoletto"

**The Ida and Conrad H. Smith Endowment**  
performance sponsor for the Saturday May 21, 2011 performance of "Rigoletto"

**Doug Allison**  
performance sponsor for the Sunday May 22, 2011 performance of "Rigoletto"



**SUBSCRIBE TODAY!**

**Call 313.237.SING**

**or visit michiganopera.org**

**THE KREFT ARTS PROGRAM** welcomes  
**fifth house ensemble**



## "Black Violet": Act II

**Friday, March 11 • 8 p.m.**

Chapel of the Holy Trinity

**Tickets: \$10 (Students & Seniors: \$5)**

Call 734-995-4612 or order online at [www.cuaa.edu/kreftarts](http://www.cuaa.edu/kreftarts)

This lively young chamber ensemble from Chicago returns for the second act of their collaboration with graphic novelist Ezra Clayton Daniels, melding music, vivid art, imagery and a riveting narrative about a young black house cat during the outbreak of the Black Plague in 17th century London.

*Truely, An Unprecedented Experience in Music, Art and Narrative*



**CONCORDIA UNIVERSITY**  
Ann Arbor, Michigan

4090 Geddes Road  
Ann Arbor, MI 48105

## Promises of Freedom

2.27.11 – 4.17.11



Charles White, American, 1918-1979, Gospel Singers, tempera on board, 1961, 20 x 28 inches, The Arthur Primas Art Collection

From the Arthur Primas collection, this exhibition tells the stories of life in America as seen through the lens of African American Artists.

**FLINT INSTITUTE OF ARTS**

Flint, MI 48503 | 810.234.1695 | [flintarts.org](http://flintarts.org)

**TARGET FREE SATURDAYS**

Supported By CHARLES STEWART MOTT FOUNDATION



## Scharoun Ensemble Berlin

Chamber Musicians of the Berlin Philharmonic

Wed, Mar 9 | 8 PM  
RACKHAM AUDITORIUM

PROGRAM  
Kurt Rhode As We Do  
Dvořák Czech Suite in D Major, Op. 39 (1879)  
Schubert Octet in F Major, D. 803 (1824)

MEDIA PARTNER **WGTE 91.3 FM.**

## Martin McDonagh's The Cripple of Inishmaan

Druid and Atlantic Theater Company  
Gary Hynes director

Thu-Sun, Mar 10-13  
POWER CENTER

*The Cripple of Inishmaan* is "a break-your-heart, cruelly funny evening directed with an exhilarating ruthlessness and acted with a bracing lack of sentimentality." (*The Guardian*) The second play in Martin McDonagh's "Aran Islands" trilogy, it is infused with his trademark humor, rich with macabre cruelty, and teeming with eccentric island characters. Ireland's acclaimed Druid Theater Company makes its UMS debut with this 2008 production.

INDIVIDUAL PERFORMANCES SPONSORED BY  
LINDA AND MAURICE BINKOW  
PHILANTHROPIC FUND



MEDIA PARTNERS **MICHIGAN RADIO 91.7 FM,**  
**BETWEEN THE LINES,** AND **ANN ARBOR'S 107ONE.**

## Bach's Mass in b minor

### Bach Collegium Japan

Masaaki Suzuki conductor

Thu, Mar 24 | 8 PM  
HILL AUDITORIUM

PROGRAM  
J.S. Bach Mass in b minor, BWV 232 (1724-49)

10/11 MAJOR ORCHESTRAS SPONSORED BY **FOREST**  
HEALTH SERVICES

CO-SPONSORED BY **ROBERT AND MARINA WHITMAN**  
AND **CLAYTON AND ANN WILHITE.**

MEDIA PARTNER **WGTE 91.3 FM AND WRCJ 90.9 FM.**



## Shakespeare's Richard III and The Comedy of Errors

Propeller  
Edward Hall director

POWER CENTER

Propeller, the internationally celebrated, innovative Shakespeare company led by Edward Hall, presents new productions of two of Shakespeare's greatest contrasting masterpieces. Renowned for combining a rigorous approach to the text with an exciting, physical aesthetic to engage its audience's imagination and bring fresh understanding to classic plays, Propeller is Shakespeare rediscovered.

### Richard III

Wed, Mar 30	7:30 PM
Fri, Apr 1	7:30 PM
Sat, Apr 2	2 PM
Sun, Apr 3	7:30 PM

*Richard III* brings the War of the Roses cycle of history plays to a close in bloody fashion. Arguably Shakespeare's most villainous King, Richard murders his way to the throne, unable to resist his cruel wits and dark humor. This hugely entertaining and diabolical adventure tells the story of one man's journey to heaven, then back to hell.

### The Comedy of Errors

Thu, Mar 31	7:30 PM
Sat, Apr 2	7:30 PM
Sun, Apr 3	2 PM

*The Comedy of Errors* is Shakespeare's most farcical comedy, and also his smartest. Two sets of estranged twins, separated at birth, find themselves in the same city 25 years later with hilarious consequences. A series of mistaken identities, assumed personas, and wild mishaps bring a family crisis into heartwarming focus.

\*The two plays will be presented in repertory with the same cast.

INDIVIDUAL PERFORMANCES SPONSORED BY **ROBERT**  
AND **PEARSON MACEK, JANE AND EDWARD SCHULAK,**  
AND **LORETTA SKEWES AND DODY VIOLA.**

MEDIA PARTNERS **WEMU 89.1 FM, BETWEEN THE LINES,**  
**MICHIGAN RADIO,** AND **METRO TIMES.**

## St. Petersburg Philharmonic

Yuri Temirkanov conductor | Nikolai Lugansky piano

Sat, Apr 2 | 8 PM  
HILL AUDITORIUM

PROGRAM  
Rimsky-Korsakov Scheherazade, Op. 35 (1888)  
Rachmaninoff Piano Concerto No. 2 in c minor,  
Op. 18 (1900-01)

10/11 MAJOR ORCHESTRAS SPONSORED BY **FOREST**  
HEALTH SERVICES

SPONSORED IN PART BY **DONALD MORELOCK.**

MEDIA PARTNERS **WGTE 91.3 FM, WRCJ 90.9 FM,** AND **DETROIT JEWISH NEWS.**

## Septeto Nacional Ignacio Piñero de Cuba

Thu, Apr 7 | 8 PM  
HILL AUDITORIUM

Performing some of the most treasured and well-known Cuban songs in the tradition of Ignacio Piñero Martínez, the group's exceptional musicianship is firmly rooted in the musical explosion of Cuban son that took place during the 1920s and 1930s.

MEDIA PARTNERS **WEMU 89.1 FM, MICHIGAN CHRONICLE,** AND **METRO TIMES.**

## Schubert Cycle Concert 3

### Takács Quartet

Jeffrey Kahane piano  
Paul Katz cello  
John Feeney double bass

Fri, Apr 8 | 8 PM  
RACKHAM AUDITORIUM

PROGRAM  
Schubert Piano Quintet in A Major, D. 667 ("Trout") (1819)  
Schubert Cello Quintet in C Major, D. 956 (1828)

SPONSORED BY **GIL OMENN AND MARTHA DARLING.**

## Tetzlaff Quartet

Sat, Apr 9 | 8 PM  
RACKHAM AUDITORIUM

PROGRAM  
Haydn Quartet in g minor, Op. 20, No. 3 (1772)  
Mendelssohn Quartet in a minor, Op. 13 (1827)  
Sibelius Quartet in d minor, Op. 56  
("Voces Intimae") (1909)

SPONSORED BY **ANNE AND PAUL GLENDON.**

MEDIA PARTNER **WGTE 91.3 FM**

## Secret Agent Tony Allen's Afrobeat Tour

Sat, Apr 16 | 8 PM  
RACKHAM AUDITORIUM

The drummer behind the legendary Nigerian bandleader Fela Anikulapo Kuti, Tony Allen is probably the most highly regarded African drum set player, with drummers and other musicians of all backgrounds marveling at his polyrhythmic style.

SPONSORED BY **Comerica**

MEDIA PARTNERS **WEMU 89.1 FM, MICHIGAN CHRONICLE,**  
AND **ANN ARBOR'S 107ONE.**



Call or click for tickets!  
**ums 734.764.2538 | www.ums.org**

outside the 734 area code, call toll-free 800.221.1229





## 06 A DAY IN TECUMSEH

### TRAVEL & CULTURE

Take a day trip to Tecumseh, MI and surrounding Lenawee County and you'll find that you can experience everything you're looking for, from small town charm to high-class cuisine, and from relaxing art walks to heart racing action.



Photo by Indianapolis Convention & Visitors Association

## 16 PASSPORT TO THE ARTS

A Detroit Cultural Exchange with Indianapolis

### TRAVEL & CULTURE

The Detroit Passport to the Arts (DP2A) would like to issue you a "passport" to grant you greater access to the world of the arts right here at home as well as in nearby cities like Indianapolis.



## 12 Tuning In to MUSIC CITY

### TRAVEL & CULTURE

Spend some time with ASM in Nashville, TN and discover a beautiful and welcoming city that is deeply rooted in music, theater and art... but *mostly* in music.



Photo by Amy Johnston

## 22 CHASING THE CHOCOLATE FAIRY

### CULINARY ART

Follow ASM in search of the sweet treat derived from the Theobroma plant. From truffles to buttercreams; from chocolate covered pretzels to chocolate footballs, Ann Arbor has quite a sweet tooth for the chocolate fairy.

**PUBLISHER**

Jonathan E. Himlin

**ASSOCIATE PUBLISHER**

Rory Russell

**CONTACT**

LionTreeCommunications@Gmail.com

**CONTRIBUTING WRITERS**

Kim Brown

Amy Johnston

Erin Mann

Nicole Rupersburg

**PHOTOGRAPHY**

Amy Johnston

**ADVERTISING**

734.904.5904

rory@ArtShowcaseMagazine.com

**EVENT SUBMISSIONS**

Calendar@ArtShowcaseMagazine.com

**WEBSITE**

www.ArtShowcaseMagazine.com

**VISIT ASM ON FACEBOOK**

*Art Showcase Magazine* is Southeastern Michigan's premier print resource for fine entertainment in the arts. Our mission is to cultivate among our readers enhanced support, awareness and accessibility to local high art and culture. We help our readers to maximize the enjoyment they find in the arts, and we assist them in pairing their lifestyle interests with local arts opportunities.

Opinions of Art Showcase contributing writers are not necessarily those of the publisher. Reproduction in whole or in part of any text, photographs or illustrations without written permission from the publisher is strictly prohibited.

ART SHOWCASE MAGAZINE  
is published by



Lion Tree Communications.  
Printed in the USA.  
©2011 Art Showcase Magazine.  
All rights reserved.

PLEASE RECYCLE.

**Ann Arbor Art Center**  
Where Creativity and Community Meet



**Studio Art Courses & Workshops**  
for all ages & abilities



**Exhibition Galleries**  
featuring established & emerging artists



**Gallery Shop**  
with unique artwork & gifts by regional artists

734.994.8004 • [www.annarborartcenter.org](http://www.annarborartcenter.org)  
117 W. Liberty St • Ann Arbor, MI 48104

**PAINT THE TOWN**  
MAY 7, 2011



**WINEFEST**  
A FUNDRAISING EVENT FOR THE  
Ann Arbor Art Center

FOR EVENT DETAILS AND TO PURCHASE TICKETS, VISIT  
[ANNARBORARTCENTER.ORG](http://ANNARBORARTCENTER.ORG)

# A DAY IN TECUMSEH By Erin Mann

## Discover a Small Town Destination with Sky-High Appeal



Brimming with specialty shops, mouth-watering dining options and soul-stirring art, Tecumseh is much more than Michigan's premier skydiving dropzone (though if that's what you're looking for, you'll definitely find it at [www.skydivetecumseh.com](http://www.skydivetecumseh.com)). Tecumseh is the ideal destination for your next day-trip. Located in Lenawee county, downtown Tecumseh is just a short car ride away from Ann Arbor,

Toledo or Detroit. Round up the family, or a few friends, and experience all Tecumseh has to offer.

Start your trip at Tecumseh's neighborhood coffee shop, The Daily Grind. Order a tall cuppa joe to-go, and choose from an assortment of homemade pastries and breakfast items.

With caffeine in hand, a leisurely stroll around downtown will familiarize you with Tecumseh as you bear witness to beautiful art along the way. Tecumseh's 4th annual ArtTrail, an outdoor art exhibition created by Midwest Sculpture Initiatives, features fifteen sculptures by twelve different artists. The sculptures are on display through April 2011 for you to enjoy at your own pace. A map of each sculpture's location and artist is available at: <http://www.downtowntecumseh.com/PDF/ArtTrail2010-11.pdf>.

If peckish after your walk, stop by the British Pantry where you'll experience a bit of merry old England without the plane ride. Enjoy a slice of crust-less spinach quiche served with their famous apple slaw or try the ploughman's lunch, a traditional British cold platter. After lunch, stick around for afternoon tea service and choose from over 60 teas. The tea is steeped in decorative tea pots and served in pretty cups and saucers. An array of delightful nibbles, like scones and crumpets, are available a la carte.

Proprietor Rochelle Bird provides exceptional service for all her guests; she wants their visit to the British Pantry to be a memorable one. "Ninety-nine percent of the tea we serve is loose so our guests have the experience of the loose tea infusing, the aroma and the thrill of pouring the tea into a strainer over the cup." Before leaving, don't forget to peruse the gift shop and take home a bag of your favorite tea leaves.

*more>>>*

**There's a small town in southeast Michigan where fresh ideas flourish,**

yet its true mid-western roots remain intact. The people who live here believe in preserving the rich history of the area, while also supporting contemporary creativity. Their strong sense of community is clear to guests when they visit the unique establishments that line the streets of the historic downtown district. This place is Tecumseh, and it's anything but ordinary.

Interior Design • Cabinetry & Counter Tops • Home Furnishings & Accessories

Art Work • Gifts • Special Events Planning • Interior Design • Cabinetry & Counter Tops • Home Furnishings & Accessories

# the purplepear tree



109 W. Logan  
Tecumseh, MI 49286

Hours: 10-5 Tue-Fri  
10-4 Sat

517.424.5203  
www.purplepeartree.com



Interior Design • Cabinetry & Counter Tops • Home Furnishings & Accessories

# LOCAL FLAVOR

"Chef Alan Merhar is taking advantage of his country location and bringing it to the table with rare panache... One of my favorite restaurants."

-The Ann Arbor Observer

featuring Seasonal, Modern Midwestern fare



*Evans Street*  
STATION

Genuine Hospitality • Private Dining Room • Outdoor Patio  
Full Service Bar • Private Events & Catering

**Easter Sunday Buffet** 10 am - 4 pm  
**Mother's Day Dinner** 11 am - 6 pm

517.424.5555 • 110 S. Evans St. • Tecumseh • www.evansstreetstation.com

Downtown

# Tecumseh...

innovative • timeless • inviting

Spend the day discovering what makes Downtown Tecumseh special...



Be our guest any day of the year and see for yourself what makes Tecumseh innovative, timeless, and inviting.



- Unique Eateries
- Specialty Shops
- Quaint Lodging
- Outdoor Sculpture Exhibit
- Special Events

Find us on  
facebook

www.downtowntecumseh.com • 517-424-6003

COMMUNITY

arts  
of TECUMSEH

www.TecumsehArts.org

Classes held in the  
JOHN W. SMITH BUILDING • SMITH PARK  
804 N. Evans Street • Tecumseh

517-423-0000 • info@TecumsehArts.org



Photo by Amy Johnston

With a full tummy, head on over to River Raisin Gallery and feast your eyes on some of the area's finest art. "The mission of the gallery is to help emerging artists become more appreciated and to encourage a broader swath of people to feel comfortable buying art," comments gallery owner Lisa Powell.

An afternoon in Tecumseh is not complete without a visit to Michigan's first urban winery. From the Latin meaning "five seas," Pentamere Winery sources grapes from established vineyards in the Great Lakes area. Located in a one hundred year old building, the winery features a tasting room with beautiful maple flooring and exposed brick walls. At the back of the room, tasters can look down into "the pit," where the high tanks used to ferment the wine are located for a bird's eye view of the wine making process.

Chief Vintner Dan Measel makes a wide variety of wines to ensure there is a wine for everyone. Wine styles range from very dry white and red wines to sweet white and red table wines, and even port style dessert wines. One of Pentamere's best-sellers, Harvest Apple, is made from apples grown just 5 miles south of the winery at Kapnick's Orchard.

Pentamere Winery is the only manufacturer of wine jelly in Michigan and one of six in the United States. The jellies are made in a local commercial kitchen from house wines, sugar and pectin and are available in five flavors. The winery hosts many events, like the upcoming "Fools for Michigan" in April, which will feature a multi-course menu of foods grown and produced in the state paired with Pentamere wines. On April 9th and 10th, Pentamere will participate in the Michigan Wine Celebration, a Pioneer Wine Trail food and wine pairing weekend.

Ed Gerten, operations manager at Pentamere Winery, recognizes the importance of mutual support among downtown Tecumseh's businesses. "We all realize that we're playing in the same sandbox. We gotta work together or it's not going to work for any of us. We promote other businesses and they promote us."

The folks at Pentamere Winery will likely suggest you cross the street to meet John and Erica Alyward, owners of Boulevard Market, a charming specialty foods shop with a European atmosphere. In addition to an excellent selection of import and craft brewed beer, the shop is awash with fine chocolates, oils and vinegars, tapenades, salamis and other imported gastronomic pleasures. But Boulevard Market is best known for its cheeses; many of them made on-site by John using traditional French methods with raw milk from nearby farms under the moniker Four Corners Creamery. Not sure if you prefer a hard or soft cheese? Cow, sheep or goat? Sweet or pungent? Erica will gladly dish out samples to help you decide. The Northern Lights is a soft cow's milk cheese made with garlic, peppercorns and paprika and one of the market's best-sellers. [more>>>](#)



Photo by Amy Johnston



Photo by Amy Johnston

# Spring Fling

## Lenawee County Blossoms with Family Fun



800-LENAWEE  
800-536-2933

[www.visitlenawee.com](http://www.visitlenawee.com)



### Hidden Lake Gardens

#### Spring Bulb Show

March 12 - 27

Spring at Hidden Lake Gardens is an exciting time of year. Bulbs poking their heads through the soil, animals emerging from a long winter slumber and birds trumpeting in the season can all be seen and heard at Hidden Lake Gardens.

#### Plant Sale

May 7 from 10am to 2pm

Whether you are a new gardener or a plant connoisseur, you will enjoy this fantastic event. Master Gardeners will be available to help you choose from a wide variety of perennials, ferns, wildflowers, hosta, grasses and a unique selection of trees and shrubs.

(517) 431-2060 • [www.hiddenlakegardens.msu.edu](http://www.hiddenlakegardens.msu.edu)

### The Croswell

#### Dora the Explorer Live!

#### Dora's Pirate Adventure

April 8-10 & 15-17

An adventure starring Nickelodeon's courageous Latina heroine - Dora! With the help of the young audience, Dora uses numbers, Spanish language, and reasoning to overcome the obstacles in her journey (Adults \$12 | Children \$6).

#### Sunday Cinema Series - Movies at the Croswell

Most Sundays at 6pm

Check the Croswell's website for complete schedule.

#### 2011 Broadway Season tickets on sale now!

(517) 264-SHOW (7469) • [www.croswell.org](http://www.croswell.org) • Downtown Adrian



### Adrian Symphony Orchestra

#### Peter and the Wolf - Family Discovery Concert

March 26 at 10am

A concert designed for young children, combining narrated stories, children's artwork and the music of Prokofiev, Shostakovich and Kabalevsky (Adults \$10 | Children \$5). Your child may also stay for the "Made By Me" art activity and snack following the performance (additional \$5).

#### Heroic Voices - Classical Concert

April 16 at 8pm

Respected as one of the foremost composers of our time, Bright Sheng guest-conducts his *Postcards*, with John Thomas Dodson conducting Beethoven's *Symphony No. 3, Eroica*.

(517) 264-3121 • [www.adriansymphony.org](http://www.adriansymphony.org)

### Tecumseh Center for the Arts

#### The Irish Rovers

March 13 at 3pm

These international ambassadors of Irish music have charmed and entertained people around the world (Adults \$28 | Students/Seniors \$24).

#### Water Coolers

April 1 at 7:30pm

Hilarious comedy, original music and parodies of familiar songs unite to celebrate the crazy, funny, maddening and yet somehow universally comforting insanity of every day life (Adults \$24 | Students/Seniors \$21).

#### Golden Dragon Acrobats

April 29 at 7:30pm

The Golden Dragon Acrobats combine award-winning acrobatics, traditional dance, spectacular costumes, ancient and contemporary music to present a show of breathtaking skill and spellbinding beauty (Adults \$24 | Seniors \$21 | Youth \$15).

(517) 423-6617 • [www.thetca.com](http://www.thetca.com)

Inside the red brick exterior of Tecumseh's old firehouse you'll find a memorable dining experience you will not soon forget. Evans Street Station combines that which is old and new in a refreshing and remarkable way. The food is comfortable and lacking pretension at its core, but a dish like the pan seared sea scallops, served alongside ginger pork dumplings and a bed of soba noodles topped with lotus root, is also distinctly contemporary. The contrast of classic and modern is reinforced throughout the menu. Stimulating both the eye and the palette, Executive Chef Alan Merhar breathes new life into traditional preparations with his artistic presentations and farm-to-table philosophy.

At first, Tecumseh may seem an unlikely location for a restaurant that rivals big city eateries. But Evans Street Station's rural locale is essential to its mission; to source the best available seasonal ingredients from local growers and producers. Chef Merhar works closely with more than a dozen area farms to procure the various elements of his dishes.

A testament to its success, Evans Street Station celebrates its 10th anniversary this year. The food, both delicious and innovative, is only part of the equation that gives this small-town restaurant its staying power. You'll find the interior space comforting; walls the color of sage trimmed in mahogany wood and a flickering field stone fireplace invite you to stay awhile and savor each taste.

Next, consider catching an after-dinner performance at the Tecumseh Center for the Arts. For 30 years, the TCA has enriched the community with high-quality, reasonably-priced and diverse entertainment. The 572-seat theatre has hosted numerous international performers, films and local theatre groups. The Irish Rovers, a six-piece band who refer to themselves as "international ambassadors of Irish music," return to the theatre in March. Come back in April to laugh with The Watercoolers, a New York-based comedy group.

Truth be told, there is much more to see and do in Tecumseh and surrounding Lenawee County than one day will allow. A spring weekend country getaway could afford the opportunity for art, culture, history and nature buffs to branch out and discover the many well-preserved historic downtowns and buildings, restored Victorian and Queen Ann Houses, museums, antique shops and other gems that Lenawee County offers. One such place just 10 miles west of town is Hidden Lake Gardens, a 755-acre arboretum that displays stunning indoor and outdoor gardens and five miles of marked hiking trails. Or explore the scenic Irish Hills area along the US-12 corridor with its picturesque lakes and charming cottage and log cabin accommodations. For those wanting a little more action, take a ride on the popular Murder Mystery Train, an authentic railways excursion with a 5-star gourmet meal catered by Blissfield's Hathaway House, or spend the day at thrilling Michigan International Speedway. **ASM**



Photo by Amy Johnston



Photo by Amy Johnston



*Top: A scrumptious sampling of seafood from Evans Street Station. Middle: Joh Walker is the executive director of the Tecumseh Center for the Arts, a 550-plus-seat venue for theater, dance, music and visual art. Joh, along with her husband Dan, was the original force behind The Performance Network in Ann Arbor. Above: The Michigan International Speedway is located near the intersection of US-12 and M-50 and plays host to several NASCAR events each year.*

## TRAVEL RESOURCES

### TECUMSEH

Downtown Development Authority  
112 S. Ottawa St.  
517.424.6003  
www.downtowntecumseh.com

### Food and Drink

Basil Boys  
125 W. Chicago Blvd.  
517.423.1875 / www.basilboys.com

Boulevard Market  
102 E. Chicago Blvd.  
517.423.6000 / www.boulevardmarket.com

British Pantry Tea Garden  
112 E. Chicago Blvd.  
517-423-7873  
www.thebritishpantry.com

Cowboy's Grill  
128 W. Chicago Blvd.  
517.424.1990

The Daily Grind  
139 E. Chicago Blvd.  
517.424.7463  
www.tecumsehdailygrind.com

Evans Street Station  
110 S. Evans Street  
517.424.5555  
www.evansstreetstation.com

Pentamere Winery  
131 E. Chicago Blvd.  
517.423.9000  
www.pentamerewinery.com

### Shopping

Martini Art  
414 N. Evans St.  
888.654.8312 / www.martiniart.com

Purple Pear Tree  
109 W. Logan St.  
517.424.5203 / www.purplepeartree.com

The Quilt Patch  
112 N. Evans St.  
517.423.0053 / www.thequiltpatch.com

The Wild Iris  
101 E. Chicago Blvd.  
517.424.9453  
www.facebook.com/TheWildIris

What a Find! Consignment  
100 E. Logan St.  
517.423.2959  
www.whatafindconsign.com

The Doll Cottage  
109 E. Chicago Blvd.  
517.423.3051

The Yarn Basket  
102 W. Chicago Blvd.  
517.424.5275

### Places of Interest

ArtTrail  
www.msisculpture.com

Black Door Gallery  
138 E. Chicago Blvd.  
517.605.8332

River Raisin Gallery  
154 E. Chicago Blvd.  
517.301.4700  
www.riverraisingallery.com

Skydive Tecumseh  
9305 Tecumseh-Clinton Hwy.  
517.423.7720  
www.skydivetecumseh.com

Tecumseh Area Historical Museum  
302 E. Chicago Blvd.  
517.423.2374  
www.historictecumseh.org

Tecumseh Center for the Arts  
400 N. Maumee St.  
517.423.6617  
www.thetca.org

### LENAWEE COUNTY

Lenawee Conference & Visitors Bureau  
www.visitlenawee.com

### Places of Interest

Antique Alley  
www.visitlenawee.com/antiquealley

Hathaway House  
424 W. Adrian St., Blissfield, MI 49228  
517.486.2141  
www.hathawayhouse.com

Hidden Lake Gardens  
6214 Monroe Rd., Tipton, MI 49287  
517.431.2060  
www.hiddenlakegardens.msu.edu

IRISH HILLS AREA  
www.irishhillsrecreation.com

Lenawee County Historical Museum  
110 E. Church St., Adrian, MI 49221  
517.265.6071  
Email: Lenaweemuseum@yahoo.com

Main Street Stable and Tavern  
116 N Main Street, Blissfield, MI 49228  
517.486.2144  
www.mainstreetstable.com

Michigan International Speedway  
US-12, one mile west of M-50  
Brooklyn, MI 49230  
www.mispeedway.com

Old Road Dinner Train  
301 E. Adrian St., Blissfield, MI 49228  
888.467.2451  
www.murdermysterytrain.com

Pioneer Wine Trail  
www.pioneerwinetrail.com

The Crowell Opera House  
129 E. Maumee St., Adrian, MI 49221  
517.264.7469 / www.crowell.org

Experience Human Flight!

**SKYDIVE  
TECUMSEH**

www.SkydiveMichigan.com | 517.423.7720

Readers save \$20! Code: ART

British Tea Garden  
& rooftop cafe

TEAS ■ GIFTWARE ■ SPECIALTY FOODS

112 E. Chicago Blvd., Tecumseh, MI 49286  
517.423.7873 ■ www.thebritishpantry.com

Hours: Mon-Sat. 10-5:30, Lunch from 11-3, Afternoon tea from 3-5, Sunday 11-4

Hathaway House

DESTINATION DINING

hathawayhouse.com

WWW.MARTINIART.COM  
24/7 ON THE WEB

- \*Martini glasses
- \*Cocktail shakers
- \*Martini themed gifts

414 North Evans Street  
Tecumseh, MI 49286  
OPEN SATURDAYS 10 - 5

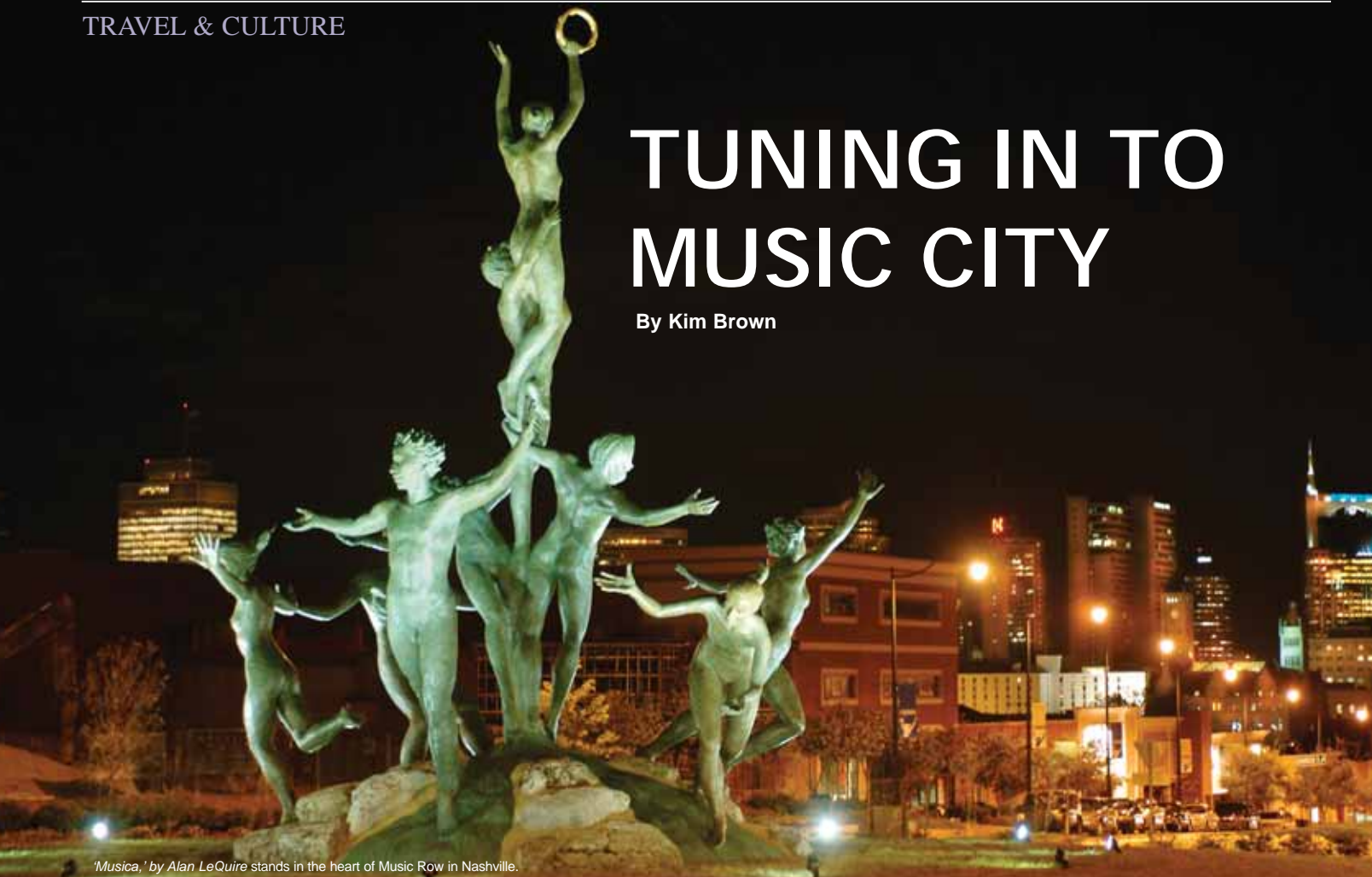
The Wild Iris

Exceptional apparel  
accessories and gifts  
for exceptional women.

101 E. Chicago Blvd.  
Downtown Tecumseh  
517424-943

# TUNING IN TO MUSIC CITY

By Kim Brown



'Musica,' by Alan LeQuire stands in the heart of Music Row in Nashville.

**Over the course of 20 years, Nashville has made its way into my heart.**

I love the sloping streets where every other storefront has a neon sign depicting a guitar, musical note or record album. I am charmed by the old train trestles and bridges, but even more so by the friendly people. But until 2010, I had never visited most of the famous attractions.

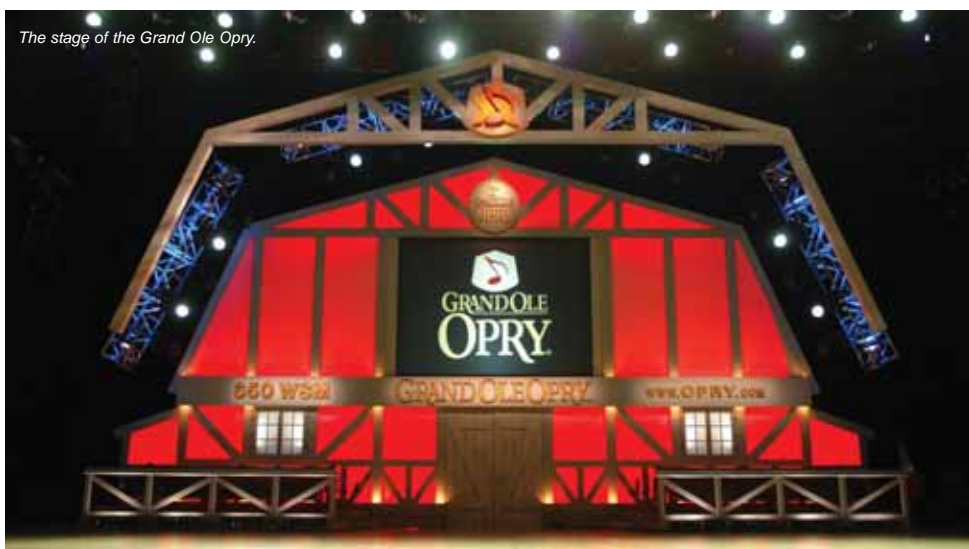
Last year I finally hit Music Row, the Opry, honky tonks, and more. In search of Nashville history, one of my first stops was the red brick Ryman Auditorium. Originally built as Union Gospel Tabernacle in 1892 by riverboat captain Thomas Ryman, the wooden-pew'd venue became famous for hosting the Grand Ole Opry, the world's longest running radio show. Its stage has hosted appearances by W.C. Fields, Minnie Pearl, Johnny Cash,

Bob Hope, Katharine Hepburn, Bela Lugosi, Doris Day, Roy Acuff, James Brown, Patsy Cline and countless others.

That night, I had the privilege of watching Loretta Lynn perform 'You're looking at Country' at the Ryman. At seventy-five years young, the legend dazzled the audi-

ence with a voice that was still as vibrant as her hot pink, full-length frilly dress.

The Opry show currently performs at the Grand Ole Opry House most of the year and at the Ryman in winter. Because I visited just a month after the Cumberland River floods damaged the Grand Ole Opry House, I



The stage of the Grand Ole Opry.

watched the Opry perform at the Ryman. The floods closed venues, but opened the eyes of the world to the charity of Nashville residents. Relief efforts were a common topic during my visit.

My next stop, the Bluebird Café, is hidden in a strip mall and is easy to miss. Opened in 1982 as a casual family restaurant with live music, the Bluebird evolved into a respected platform for new performers. Vince Gill and Garth Brooks cut their teeth here. Songwriters often perform in the round, sharing songs, jokes and the inspiration behind their work. Performing that night were Cory Batten, who penned a song for Brooks & Dunn; Marv Green, with songs that became hits for Faith Hill, Carrie Underwood and George Strait; and Chris Wallen, best known for Speed recorded by Montgomery Gentry. The entire group was comedic, but Wallen is a one-man-show. After his ballads have you using your last tissue, he performs hilarious parodies of his songs that make your cheeks hurt from laughing.

The Bluebird performance ended at 10 p.m. and the city was still alive. Some friends and I went back toward the Ryman to visit the honky tonks on Broadway Street. We stopped at Robert's, Wildhorse, Legends and Tootsie's. Famous musicians like Hank Williams, Willie Nelson, Patsy Cline and Kris Kristofferson called Tootsie's "home." Today, Nashville headliners often jump onstage unannounced and join the band at the honky tonks. As it happened, Raoul Malo made a surprise appearance at Robert's while I was there.

With a warm feeling for Nashville and a song in my heart, I was ready to retire for the evening. The Wyndham Hotel, formerly Nashville's historic Union Station, is a few blocks southwest of the honky tonk bars. A recent \$11 million renovation has brought new life to the handsome 110-year-old building with its dark, carved wooden beams, bas-relief sculptures, barrel-vaulted ceilings and stained glass. The hotel is a popular wedding venue, housing a lounge and fine restaurant, Prime 108.



The next day I returned to Broadway with an empty stomach, and I suggest you do the same. Prepare to meet Jack's Bar-B-Que. Tender pork shoulder, pork ribs, chicken and beef brisket are cooked in a large smoker and served with signature sauces. Savor the meat, cornbread and coleslaw on the back deck where the scent of hickory smoke pervades.

Twenty steps east is Hatch Show Print, one of the oldest letterpress shops in America. Today, Hatch uses the same carved wooden block techniques as when it opened in 1879. As the entertainment industry grew,



*Top left: The lobby of the Wyndham Hotel, formerly Nashville's historic Union Station. Above: Nashville's Bell South Building towers over the shops and honkeytonks on Broadway Street. At left: Hatch Show Print Curator Jim Sherraden.*

this shop emerged as a poster source for virtually all of Nashville's musicians. Years later, as offset and digital printing became affordable, Hatch lost business. In the '80s and '90s however, artists like Emmylou Harris, Pearl Jam, Beastie Boys and REM discovered the Hatch signature style. Hatch has been a popular design house since, and still prints small jobs onsite. Curator Jim Sherraden uses the library of type faces and images to create unique works of art available for sale at galleries in town.

Nashville has a vibrant visual art scene with gallery crawls on the third Thursday of every month. During the crawls, galleries are open from 6-9 p.m. Many serve wine and other drinks, and a shuttle is available. The Rymer, the Arts Company and Tinney Contemporary are the largest, but don't miss the smaller galleries like Twist, The Arts Company, or MIR.

*more>>>*



Cheekwood Botanical Garden & Museum

Cheekwood Botanical Garden & Museum of Art is housed on the former estate of the Cheek family, who made \$40 million in the 1920s when they sold Maxwell House Coffee to General Foods. Cheekwood is beautiful. I enjoyed the blend of horticulture, art and history.

Next to Union Station is another converted building: the Frist Center for the Visual Arts, where you can enjoy art collections on loan from around the world. Like Union Station, the Frist enjoyed a former life. The 1920s art deco building was once the main post office in Nashville. The Frist also offers live music on Thursday and Friday nights.

The Frist Center for the Visual Arts hosts "Frist Fridays" featuring live local music.

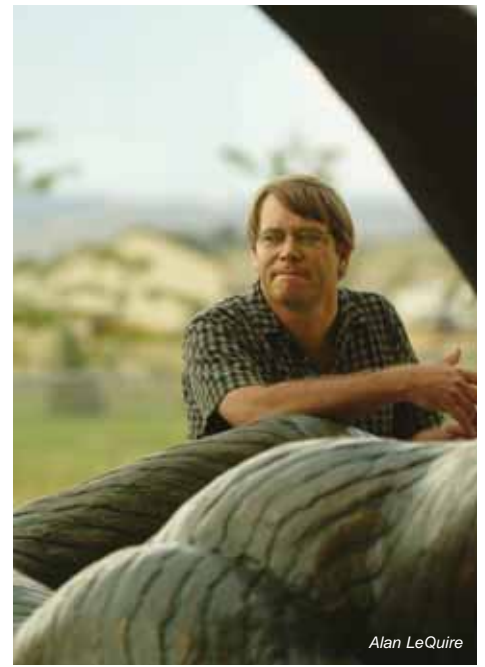


At least seventeen colleges and universities call Nashville home, including Vanderbilt University. In 1866, Nashville was one of the first cities to construct a college for freed slaves; Fisk University. Nashville has thus earned the nickname, "Athens of the South," in comparison to Plato's Academy in ancient Greece.

In honor of Tennessee's 1895 centennial celebration, a full-sized replica of the Athenian Parthenon was built in Centennial Park. In the basement is an art museum. In 1971, local sculptor Alan LeQuire created a gilded 42-foot tall Athena statue on the second floor to match the ancient Grecian Parthenon. While not a household name, LeQuire has influenced the landscape of the city for over forty years. In addition to his Athena, his sculpture, Musica, stands in the heart of Music Row depicting nine nude dancers of distinct ancestry and representing the diversity of the city's population and the livelihood of its art. The statue was the subject of controversy upon its 2003 unveiling, spurred by organizations offended by the portrayal of nudes.

LeQuire's gallery and studio, on Charlotte, west of downtown, houses a breathtaking array of bronze, wood, plaster and clay sculpture, as well as paintings and jewelry by area artists.

Next, I made my way to Patterson House, a restaurant and bar named after controversial historical figure Governor Malcom Patterson. In 1909, Patterson vetoed the return of statewide prohibition but was overruled by the state legislature. Fortunately, that's no longer an issue. Beyond the entryway curtain, you'll find your choice of 50 cocktails available with eight different types of twice-filtered ice in unusual shapes and sizes. And if you're hun-



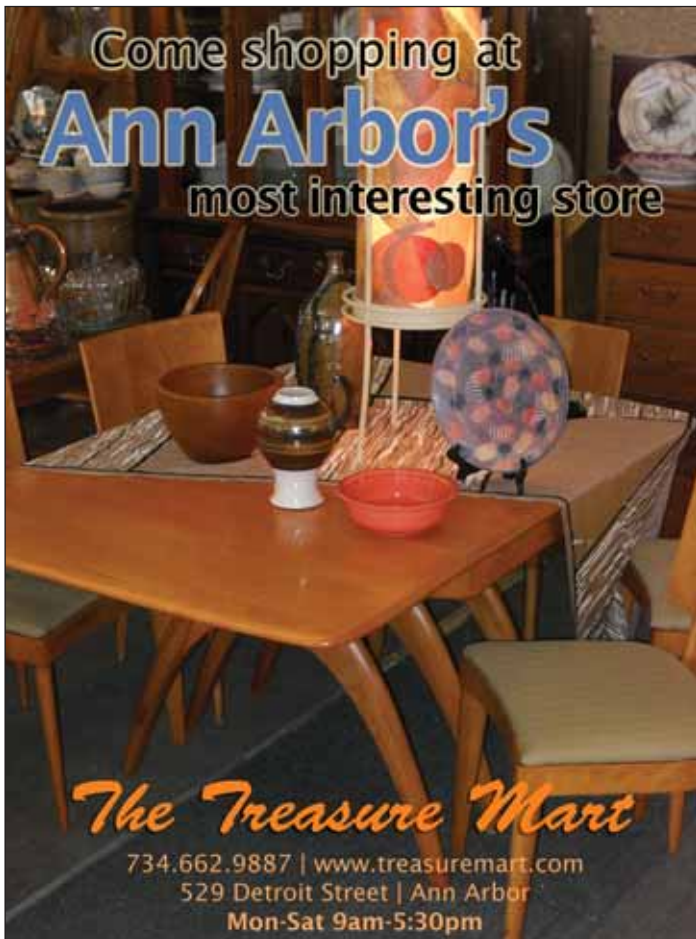
Alan LeQuire

gry, the small plates are deliciously calorie-laden and worth every bit of guilty indulgence.

Nashville's signature product is music. Its most famous attractions are country music-related. Because of this, many assume that Nashville music means country. But to overlook the breadth and versatility of Music City would be a mistake. In addition to world-renowned recording studios that work with all genres, Nashville has a symphony, an orchestra, an Opera and a ballet company. I saw posters for local bluegrass, rock-n-roll, indie and hip hop bands. In addition to country legends like Martina McBride, Willie Nelson and Waylon Jennings, Ke\$ha, The Black Keys and Jack White call Nashville home.

Nashville is a cornucopia of music, songwriting, art, food, performance venues, history and education. The resulting combination is a cosmopolitan city with an artsy edge and friendly, charitable residents. Still on my list to visit are the Country Music Hall of Fame & Museum, the Grand Ole Opry House and Opryland USA, RCA Studio B, the walkable districts of Brentwood & Hillsdale and more. And you can guess that I'll hit some of my favorite venues from 2010 again. **ASM**

Come shopping at  
**Ann Arbor's**  
 most interesting store



*The Treasure Mart*

734.662.9887 | [www.treasuremart.com](http://www.treasuremart.com)  
 529 Detroit Street | Ann Arbor  
 Mon-Sat 9am-5:30pm

**PASSIONATE PERFORMANCE  
 IN REAL ESTATE**

For 25 years, music and the operatic stage were her life, but today she is just as passionate about her career in real estate. Where once her performance was measured by applause, she now gauges success by the satisfaction of her clients. Let Maryanne help make your next move in the Ann Arbor area your best yet.

**MARYANNE TELESE, REALTOR®**

CELLULAR      VOICE MAIL      E-MAIL  
 734.645.3065      734.741.4149      [mteleserealtor1@aol.com](mailto:mteleserealtor1@aol.com)



EDWARD SUROVELL  
 REALTORS  
 189H West Stadium Blvd. | Ann Arbor MI 48103



**THE FAB FAUX**

metro times presents

TheFabFaux.com

Featuring Will Lee (bassist in David Letterman's band)  
 Jimmy Vivino (Lead guitarist in Conan O'Brien's band)  
 and The Hoghead Horns & The Creme Tangerine Strings.

Performing  
**ABBEY ROAD**  
 in its entirety!

The Fab Faux recreates the complex late era material The Beatles themselves never performed live note for note.

**SAT. MAR. 19 • 7:30 PM**

Reserved seats at [Ticketmaster.com](http://Ticketmaster.com) and all Ticketmaster outlets. To charge by phone call 800-745-3000.



**MICHIGAN** ANN ARBOR'S DOWNTOWN CENTER FOR FINE FILM AND THE PERFORMING ARTS  
 603 E. LIBERTY • 734-668-TIME • [MICHTHEATER.ORG](http://MICHTHEATER.ORG)

**Ann Arbor Symphony Orchestra**  
*Great Performances Made In Michigan*

Arie Lipsky, Conductor



MAINSTAGE CONCERTS  
 March 12 - *Russian Romance*  
 April 30 - *Mahler's Third*

BENARD L. MAAS FOUNDATION  
 FAMILY CONCERT SERIES  
 March 13 - *Sea to Shining Sea*

April 27 - *String Fling*  
 Annual Fashion Fundraiser  
 11:30 AM, Travis Pointe Country Club  
 call for details

For Ticket Information:  
 734/994-4801  
[www.a2so.com](http://www.a2so.com)

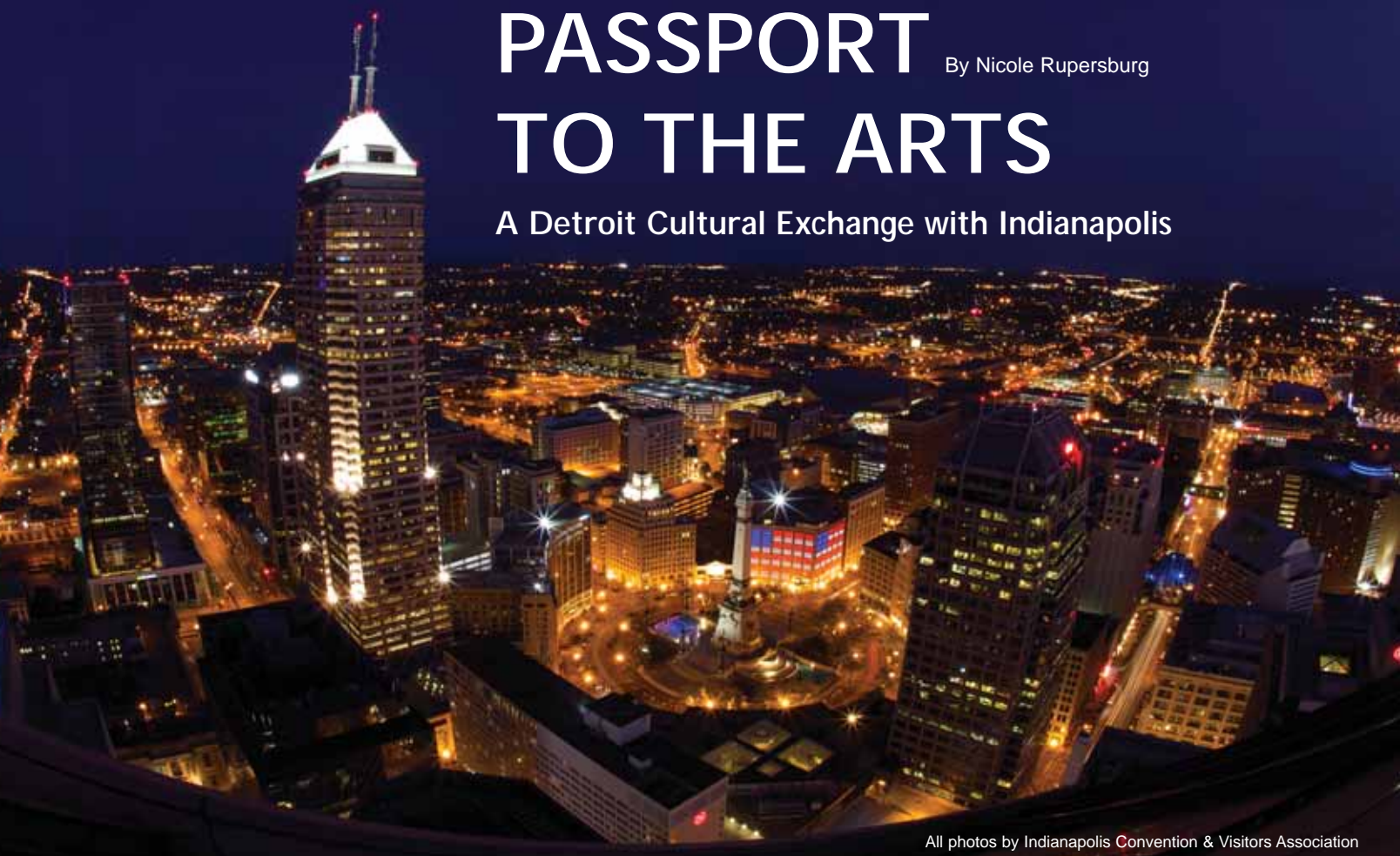


Ann Arbor Symphony Orchestra | Ann Arbor, Michigan | [www.a2so.com](http://www.a2so.com)

# PASSPORT TO THE ARTS

By Nicole Rupersburg

A Detroit Cultural Exchange with Indianapolis



All photos by Indianapolis Convention & Visitors Association

## Passports are your all-access pass to experience an entire world—quite

literally—of different cultures, customs and cuisines. Now, a Detroit-based arts organization called The Detroit Passport to the Arts (DP2A) would like to issue you a “passport” that grants you greater access to the world of the arts right here at home. This forward-thinking arts program allows metro Detroit “Passport holders” access to half a dozen different performance arts and film events—from opera to modern dance, the symphony to chamber music—throughout the year-long season at a deeply discounted price, with coordinating social events exclusive to members. The goal of DP2A is to attract a young professional audience and engage them in their arts community.

And now, members of DP2A can also enjoy this enhanced arts access in other cities. This January, Passport holders participated in the first-ever Cultural Exchange Program with Indianapolis's IndyHub. The idea of the “cultural exchange” is to allow members of these sister arts programs a chance to experience the cultural attributes of another city with other arts

enthusiasts, taking the social elements integral to DP2A and expanding it to other places with vibrant arts communities.

IndyHub is the Indianapolis-based arts program DP2A was modeled after. Each group's mission is fundamentally the same and through a successful relationship they have been able to grow with hopes of expanding to other Midwestern cities. Possible candidate cities include Cleveland, Cincinnati, and Pittsburgh, which would create a strong network of culturally and socioeconomically similar cities in close proximity.

Even in our heart of Midwestern hearts, Detroiters still hear “Indianapolis” and sneer, slinging the same “what kind of cultural scene exists there?” that we all-too-often hear uttered about our own hometown. But travelers to “Nap-town” will be pleasantly surprised; showing the same progressive spirit and community drive that we tout for ourselves, Indianapolis boasts a rich, proud arts scene that celebrates its own history and culture. What we found was a city not so unlike our own; a city full of one-of-a-kind places and passionate people. In other words, it's not all smokestacks and racecars. And being only a five-hour drive also makes it an ideal weekend getaway.

**Stay**

Indianapolis has a very walkable downtown area, and staying at one of these conveniently-located properties puts you in the epicenter of Indy's downtown activities. Also, in preparation for the 2012 Super Bowl, climate-controlled skywalks will connect the Lucas Oil Stadium to some 4,700 hotel rooms as well as downtown shopping, restaurants and bars.

The classically elegant Westin Indianapolis Hotel played host to DP2A visitors and offered comfortable accommodations and gracious, friendly service, all in the heart of downtown Indy. It is also home to one of the top-ranked steakhouses in the country, Shula's Steakhouse.

Whether you're looking for upscale four-star accommodations, contemporary luxury, or trendy affordability, the city block that is home to five distinct Marriott properties connected to the Indiana Convention Center - Indianapolis Marriott Downtown, Fairfield Inn & Suites, SpringHill Suites, Courtyard Indianapolis at the Capitol, and the newly-opened ultra-sleek JW brand-has a little something for all guests within walking distance of all the downtown attractions.

The historic Canterbury Hotel is all old-world elegance and sophistication, with a perfectly proper piano player in the "parlor" and afternoon tea for guests. Located next door is the St. Elmo Steak House, an

Indianapolis staple since 1902 with the largest wine cellar in Indiana and an infamous shrimp cocktail once named "Spiciest dish on the planet" by the Travel Channel.

Conde Nast and Trip Advisor both named this luxury Hilton property, the Conrad Indianapolis, one of the top hotels in the United States. It is also home to Tastings - A Wine Experience, which features enomatic machines that contain 100 different wines to taste. You dispense your own samples by the taste or glass (love it? you can also order by the bottle) using a rechargeable card loaded with any dollar amount you choose with any excess refundable at the end of your visit. They also have a handsome menu of artisanal cheese and charcuterie plates, flatbread pizzas and tapas.

**Play**

In downtown Indianapolis there is no escaping Monument Circle, a European-style plaza featuring shops and restaurants built around the visually prominent Soldier's and Sailor's Monument. The Christ Church Cathedral, Circle Tower and Herbert Circle Theatre all offer historic architectural experiences. And don't miss the Cabaret, an art deco club in the historic Columbia Club featuring renowned national and local cabaret performers in an intimate and sophisticated atmosphere and offering a full supper club and cocktail experience.



Virginia B. Fairbanks Art & Nature Park

For art lovers, Indianapolis offers a host of cultural adventures. Start at the Indianapolis Museum of Art, one of the largest general art museums in the United States (about 20 minutes from downtown). While there, also be sure to visit 100 Acres: The Virginia B. Fairbanks Art & Nature Park, the largest contemporary art park in the country. Each piece of art is an original commission for the park, and it is the only museum park in the world that will feature the ongoing commission of site-specific sculpture, which includes playful pieces like Funky Bones, a skeleton comprised of 20 fiberglass benches.

The 92-County Walk at the Indiana State Museum also boasts a series of outdoor sculptures, found mostly on the exterior of the museum. There is one for each county in the state, telling the story of the state's heritage in a uniquely creative way. Indy is also taking the idea of a culture walk to new lengths with the Indianapolis Cultural Trail, a half-completed \$55 million recreation path through downtown's most historic and scenic districts with public art installations. [more>>>](#)



The Indiana State Museum



At Left: The Indiana Repertory Theatre, founded in 1972, has grown into one of the leading regional theatres in the country. Above: Patrons enjoy a relaxing evening at craft cocktail bar Ball & Biscuit. Bottom: Bon Appetit Magazine named Café Patachou one of its "Ten Favorite Places for Breakfast in the Nation."

For live performances, stop into the Indiana Repertory Theatre located in the heart of downtown. The IRT's robust season features 10 different plays annually and is also the home of the IndyHub-affiliated group Dance Kaleidoscope. DP2A members caught their performance of "The Elvis Project," modern dance set to the music of The King, with a theatre full of eager dance enthusiasts who clapped and cheered throughout with a level of exuberance that was unfamiliar to us.

### Eat, Drink and Be Merry

No cultural experience is complete without culinary tourism, and downtown Indianapolis has no shortage of farm-to-table restaurants and contemporary hotspots where you'll want to spend an entire morning, afternoon or evening.

Start your day with brunch at the renowned Café Patachou, "a student union for adults" which boasts a robust menu of house-made breakfast and lunch items sourced locally. With so much on the menu it's hard to pick out a favorite, but items like the hot "French" chocolate (made with rich dark chocolate and steamed milk), Bruce's granola (a house specialty) and their painstakingly detailed coffee service helped make this place one of Bon Appetit Magazine's "Ten Favorite Places for Breakfast in the Nation."

For a light late lunch stop by specialty food shop Goose the Market for a sandwich made with their butchered-in-house, locally-procured meats and artisanal cheeses (Bon Appetit raves about these as well), or maybe some crudo and rillettes along with a glass of meaty boutique wine in their new enoteca.

Indianapolis was doing the whole sustainable cuisine thing before it was a "thing." For dinner try R Bistro, owned by James Beard Award-nominated Chef Regina Mehallik, a longtime pioneer of the sustainable food movement in Indianapolis. The menu changes every week based on what's available; all of their ingredients are sourced fresh from the farmer and from their own garden out back.

To cap off your night, try a nightcap at the ambience-rich Ball & Biscuit, a craft cocktail bar that specializes in pre-Prohibition cocktails like the Negroni and Sazerac (and is also the social "hub" of IndyHub). If you want to shake your bon-bon, head to Adobo Grill which is open late Wednesday through Saturday with live music, Latin dancing, and over 90 different tequilas available to taste by the flight or in their signature margaritas shaken tableside. If Bavarian Biergartens are more to your taste, the Rathskeller offers more than 60 beers (with heavy emphasis on German and other European imports) and all the lively entertainment of a Munich beerhall during Oktoberfest. And finally, if a hipster hole-in-the-wall with always-fantastic live jazz sounds like the perfect way to end your cultural tour of Indianapolis, head straight to the Chatterbox Jazz Club and don't look back.

For more information visit [www.visitindy.com](http://www.visitindy.com), [www.indyhub.org](http://www.indyhub.org), and [www.dp2a.org](http://www.dp2a.org). **ASM**



THE KREFT ARTS PROGRAM *welcomes*



# EMPIRE BRASS

Sunday, April 17 • 4:00 p.m.  
Chapel of the Holy Trinity

Tickets: \$15 (\$10 students and seniors)  
Call 734-995-4612 or order online at [www.cuaa.edu/kreftarts](http://www.cuaa.edu/kreftarts)

Empire Brass returns for what has become an annual event at Concordia, in a concert that incorporates selections from their own repertoire as well as works featuring Concordia's musical resources.



4090 Geddes Road • Ann Arbor, MI 48105  
Located just west of US-23 at Exit 39

For full details on this & other events go to [www.cuaa.edu/kreftarts](http://www.cuaa.edu/kreftarts)

Museum • Memorial • Library • Archive



*Illuminating the Past & Enlightening the Future*

## HOLOCAUST MEMORIAL CENTER ZEKELMAN FAMILY CAMPUS

28123 Orchard Lake Road  
Farmington Hills, MI

248.553.2400  
[www.holocaustcenter.org](http://www.holocaustcenter.org)



Check us  
out on



Spring Sale now through May 3<sup>rd</sup>

Save  
25%



[www.MaterialsUnlimited.com](http://www.MaterialsUnlimited.com) Check us out on    
*Antiques & Architectural Salvage since 1974*  
2W. Michigan Ave. Ypsilanti, MI 48197 (734) 483-6980 Tue - Sat 10-5 Sun 12-5

THE **PURPLE ROSE** THEATRE COMPANY

SOME  
COUPLES  
MAY ...

a World Premiere by  
CAREY CRIM

MARCH 24  
through MAY 28



### TICKETS

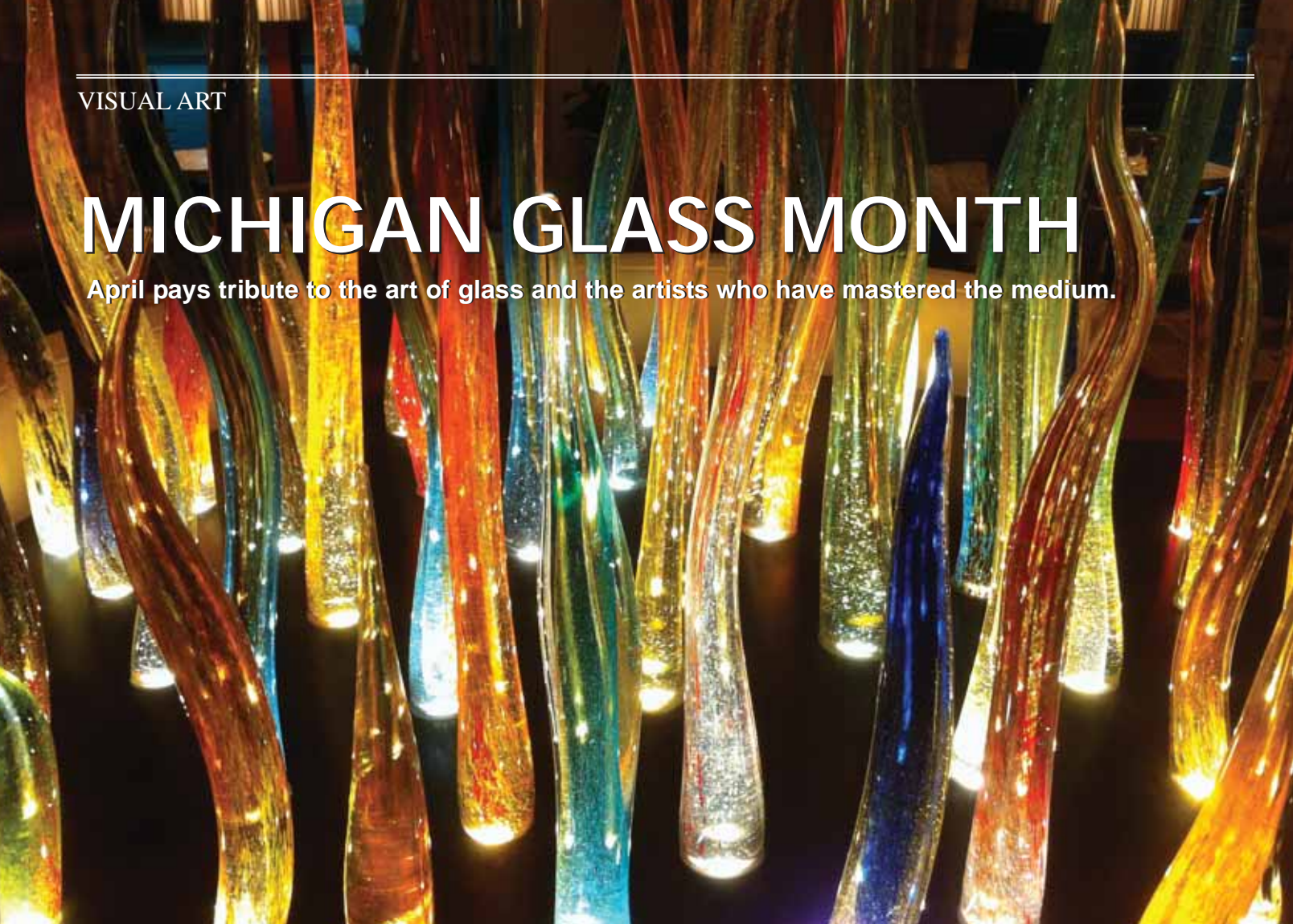
137 Park Street, Chelsea, MI 48118  
(734) 433-7673  
[www.PurpleRoseTheatre.org](http://www.PurpleRoseTheatre.org)

media partner



# MICHIGAN GLASS MONTH

April pays tribute to the art of glass and the artists who have mastered the medium.



**In Michigan, the month of April means more than thawing out from a long, cold winter.**

April is also when we celebrate the art of working with glass. Michigan Glass Month recognizes and appreciates perhaps the most delicate of art forms and the artists who have mastered the medium. The wonderful translucent creations that decorate our coffee tables and liven our foyers represent years of study, practice and creative inspiration. But glassblowing can be a fun and rewarding experience for beginners, too. Michigan is rife with opportunities to not only view glass art, but to get some hands-on experience creating your own. Here are just a few places where you can appreciate and participate in Michigan Glass Month.

**Furnace Design Studio**  
25331 Trowbridge  
Dearborn, MI 48124  
313.561.4527  
[www.furnacedesignstudio.com](http://www.furnacedesignstudio.com)

Furnace Design Studio operates in a 14,000 square-foot facility in west Dearborn. Glass artist Michelle Plucinsky, who founded FDS with fellow artist Chris Nordin, says that she most appreciates the movement and life that hot molten glass has. Plucinsky advises new glassworkers to be willing to try new things. "Technology is constantly changing, and there are so many ways to work with glass now there really is something for everyone," Plucinsky says. "Many community centers offer classes. For those really serious students I suggest choosing schools that have credentials, such as the Glass Academy in Dearborn or College for Creative Studies in Detroit."

FDS has recently partnered with Planterra, a national award-winning interior landscape firm located in West Bloomfield, to produce the first-ever Botanical Glass Exhibition, March 24-29th. Extraordinary works of glass art mixed with collections of exotic and unusual botanicals will dazzle visitors, offering a breathtaking display of color, living foliage and light. Special lectures, tours and videos will be presented during the opening week festivities.

The March 24th opening reception benefits the Henry Ford West Bloomfield Healing Arts Program. A special roundtable discussion on art and color therapy will take place on March 29th.

**Botanical Glass Exhibition**  
March 24-29, 2011, 10 a.m. to 5 p.m.  
Planterra Conservatory  
7315 Drake Rd.  
West Bloomfield, MI 48322  
[www.botanicalglass.org](http://www.botanicalglass.org)

**Baron Glassworks**  
**Furnace Studio and Gallery**  
838 Railroad St.,  
Ypsilanti, MI 48197  
734.482.8829

[www.baronglassworks.com](http://www.baronglassworks.com)

Annette Baron has long been a fixture on the Ypsilanti glass landscape. Her unique and playful style is immediately recognizable. Baron studied glass at the Toledo Museum of Art and Tidal Wave Glass in Toledo, and also at Michigan Hot Glass in Detroit. In 1998 she founded Baron Glassworks in Ypsilanti, where she teaches furnace glassblowing classes to people of all ages. In addition to conducting personalized glassblowing lessons to individuals, Baron Glassworks hosts group glassblowing parties, youth groups and provides tours for local schools.



Glasswork by Annette Baron

**Michigan Hot Glass Workshop**  
1600 Clay Street  
Detroit, MI 48211-1914  
313.871.1798

[www.michiganhotglass.com](http://www.michiganhotglass.com)  
[michiganhotglass@sbcglobal.net](mailto:michiganhotglass@sbcglobal.net)

Albert Young has been teaching the art of glassblowing for nearly 20 years. Located at the Russell Industrial Center in Detroit, Michigan Hot Glass Workshop affords students the opportunity to receive profes-

sional instruction in one of the finest studios available. Glassblowing classes meet for four hour periods once per week for eight weeks with a maximum of six students per class.

**Glassact/Southeastern Michigan Glass Beadmakers Guild**  
7667 Earhart  
South Lyon, MI 48178  
248.643.0427 / 734.461.2854

[www.glassact.org](http://www.glassact.org)

The Southeastern Michigan Glass Beadmakers Guild was founded in 2000 and is the Metro Detroit area's local chapter of the International Society of Glass Beadmakers (ISGB). This organization is dedicated to the education, promotion and preservation of lampwork and works with all levels from beginner to advanced.

**West Michigan Glass Art Center**  
326 W. Kalamazoo Ave. Ste 100,  
Kalamazoo, MI 49007  
269.552.9802

[wmglass@sbcglobal.net](mailto:wmglass@sbcglobal.net)

The West Michigan Glass Art Center (formerly known as West Michigan Glass Society) is dedicated to teaching, creating and promoting glass art in all forms to the residents of West Michigan. Its studios provide resources and facilities to artists of all

ages working in glass. Its vision is to create a nationally recognized, state-of-the-art, public-access glass art center emphasizing hands-on learning and creating glass art in all media, including stained glass, mosaic, lampworking, kiln-forming, casting and glass blowing.

**Water Street Glassworks**  
140 Water Street  
Benton Harbor, MI 49022  
(269) 925-5555

[www.waterstreetglassworks.org](http://www.waterstreetglassworks.org)

Water Street Glassworks is probably the most unique of all glass organizations, combining a non-profit, public access glassworking school, studio and gallery with a metal studio and a gelato shop, where students of its glass programs are actually employed.

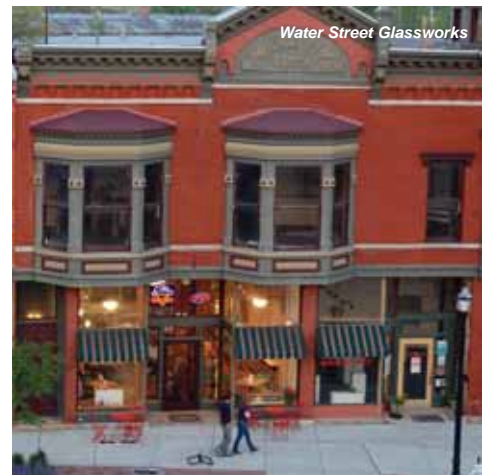
Water Street Glassworks is located in the historic Hinkley Building in Benton Harbor and opened in January 2004. Visitors can overlook the school's "hot shop"—the glassblowing and casting studio, from a viewing platform or "catwalk" and see classes in session or experience live glass demonstrations.

In September 2009, the school opened the new Blossom Fehlberg Metal Studio and expanded its curriculum to include metalworking. To date, over 1,000 students have explored the mediums of glass and metal through glassblowing, beadmaking, lampworking, fusing, casting, stained glass, glass mosaic, sculpture, welding, plasma cutting and forging classes at WSG.

ASM



The Botanical Glass Exhibition



# CHASING THE CHOCOLATE FAIRY

Words and Photos by Amy Johnston

Imagining it, we are impelled to seek it. Hooked by its scent, we brim with yearning. Tasting it, we succumb to its romance. Scientists may describe these responses to chocolate in terms of biochemistry, outlining relationships between theobromine, phenethylamine and serotonin and their effects on the human organism, but authentic connoisseurs understand that the matchless enchantment derived from chocolate consumption can come only from the Chocolate Fairy herself—Theobroma. Like the Tooth Fairy, sightings of Theobroma are rare, but evidence of her existence can be detected in chocolate shops all around Ann Arbor.

A clear case in point is Sweet Gem Confections, found in a cozy kitchen nestled within the cornucopia of Morgan and York. Like emeralds and other precious jewels, the value of the Sweet Gem experience lies in the quality and rarity of chocolate flavors. While living in Spain, Chief Executive Chocolatier Nancy Biehn observed chocolate there was "to die for" and, several years later, began making chocolates at home to give as gifts to friends. Taking her chocolates on the road to craft fairs and continuing to master her chocolate making techniques, Nancy soon outgrew her kitchen.

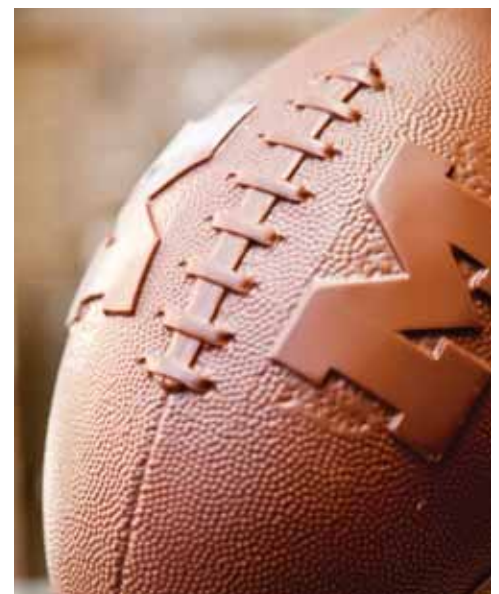
Now her small-batch artisan chocolates include such delicacies as Campfire Tea Truffles, Cappuccino Buttercreams, Jasmine Tea Truffles with Citrus Zest, "Port in a Storm," Lavender Flower Dark Chocolate Ganache, Balsamic Vinegar in Milk and Nancy's latest, and therefore favorite, Frangelico Truffles, among others. As the range of unique flavors tells us, Nancy's goal is not for Sweet Gem to become big and famous, but as Nancy says, it's "to make the best chocolate to be

made." Visit Sweet Gem Confections at Morgan and York or visit [sweetgemconfections.com](http://sweetgemconfections.com) for other locations or to order online, because although Theobroma may have blessed Sweet Gem Confections, it's up to you to sample these ambrosial delights.

Further down the Chocolate Fairy trail is Schokolad's bountiful cache of ganache and cocoa nib secrets, a place where finest Venezuelan and other chocolate is transformed into delicious truffles and realistic sculptures. Specializing in freshly made, high cocoa content European style confections, Owner Scott Huckestein recommends eating them within ten days of purchase. In that regard, he says, "We're kind of like your local donut shop."

With 80% of his business coming from custom corporate logo design, Scott hasn't run short on fun in his eight years in the chocolate trade: "There hasn't been one day that I haven't wanted to come in and make chocolate." Some examples of designs in chocolate include NASCAR trophies, cars, pianos, footballs, basketballs, chess sets, keys, picture frames, tool sets and houses. You can also get chocolate teeth, hearts, brains, ball bearings and farm scenes! Scott likes his work so much, he even hosts parties and tours on Sundays. You can order your own custom molded chocolates online at [www.schokolad.com/Chocolate/Ann-Arbor/Downtown/](http://www.schokolad.com/Chocolate/Ann-Arbor/Downtown/) or stop by the shop to taste rich, fresh truffles for yourself.

The original emblem of Theobroma, Kilwin's Chocolates and Ice Cream, has attained iconic status after twenty eight years in Ann Arbor's constantly shifting downtown scene. Even from the sidewalk, the overwhelming scent wave of waffle





cones and chocolate nabs innocent passersby and lures them into Kilwin's sugary center of indulgence. Co-owner Chera Tremontin insists on perfection when it comes to the art of presentation. "I'm picky down to the bow," she intones, reflecting that her mother and Kilwin's co-owner Karen Piehutkoski always had asserted a high level of attentiveness to detail in the family chocolate business. And truly, with everything packaged and embellished by hand, Kilwin's treats make perfect crowd-pleasing presents.

Finally, if ever there were a place to catch Theobrama delighting in a hard-earned nap, Main Street's Chocolate House would be the place to do it. Hardwood floors, turquoise, green and orange walls, Drake's Sandwich Shop memorabilia and comfy furniture provide an atmosphere that invites visitors to relax with their coffee or hot chocolate and ever-popular peanut butter "wolverines" (known in other places as "buckeyes.") Even if your hankering for chocolate isn't wildly raging (or for some bizarre reason you don't like chocolate), it's worth it to visit Chocolate House just to sip coffee at one of Drake's Sandwich Shop's original booths and reminisce about Chocolate Fairies past.

So however you wish to describe the reactions that take place when chocolate reaches your taste buds-whether in biochemical terms, using romantic expressions or by slowly exhaling, allowing the chocolate on your breath to mix with the earth's atmosphere-remember that none of it was possible without the help of the Chocolate Fairy, Theobrama. And just as important, keep in mind that Theobrama's work would be curtailed without Sweet Gem Confections, Schokolad Chocolate Factory, Kilwin's Chocolates and Ice Cream, Chocolate House or any of the other chocolate shops in and around Ann Arbor, wonderful places where you can turn your chocolate dreams into rich, creamy chocolate reality. **ASM**

where excellence comes to groove

Over 450 performances each year  
- most are free!  
Events hotline 734.764.0583  
League Ticket Office 734.764.2538  
www.music.umich.edu

**M** University of Michigan School of Music, Theatre & Dance

## The Alden B. Dow Home and Studio

Experience the Vision

Hours M-Sat 2pm, Fri-Sat 10am  
For reservations call 866.315.7678 www.abldow.org

**Ann Arbor Cooks!**  
A School by The Experience

**Corporate Team Building Cooking Classes**  
*Develop & Improve Relationships  
Improve Planning, Communication & Organization Skills  
Work in a Relaxed, Fun-Filled Atmosphere*

[www.AnnArborCooks.com](http://www.AnnArborCooks.com)  
5060 Jackson Rd. Ann Arbor, MI 48103  
734-645-1030

# 49th Ann Arbor FILM FESTIVAL

The Ann Arbor Film Festival is the longest running independent and experimental film festival in North America, internationally recognized as a premier forum for film as an art form. The AAFF will bring more than 150 new films and videos to Ann Arbor for its 49th season and will present 40 programs over six days with many U.S. or world premieres and several rare, live multimedia performances.

The 49th Ann Arbor Film Festival takes place March 22 - 27, 2011, at the historic Michigan Theater and other locations in downtown Ann Arbor. The complete festival program will be announced March 1, 2011, with tickets on sale. Passes are on sale now at [aafilmfest.org](http://aafilmfest.org).

## New This Year

Groundbreaking audio and visual artists Telcosystems will make their second visit to the U.S. to present and perform a selection new media works including *Loudthings* (47th AAFF Best Experimental Film Award winner) and the North American premiere of their newest piece.



Duke & Battersby, winners of the 48th AAFF Best of Festival award, are attending from New York for a partial retrospective of their provocative, collaborative video projects, plus a gallery exhibition in the lobby of the Michigan Theater.

Academy Award nominated director Sam Green (*The Weather Underground*) presents his live documentary performance, *Utopia In Four Movements*, which explores the battered state of utopian impulses at the dawn of the 21st century.



Japanese animator Keita Kurosaka will be in attendance to present his highly anticipated feature film, *Midori-Ko*. More than ten years in the making, employing three different modes of animation production, and consisting of more than 20,000 carefully crafted images of consumption, expulsion, mimicry, and love, *Midori-Ko* asks a fundamental question of an ecologically thinking society: at what point, is eating immoral?

The 49th AAFF will also host Chinese artist Wang Bing's 14-hour video *Crude Oil* as an installation at the Work Gallery. The piece will run on loop from March 11 - March 28, 2011.

## For the Family

AAFF's family-friendly program presents new short independent and experimental films that engage everyone from ages 5 to 95. It will screen at 11:30am on Saturday, March 26th at the Michigan Theater. FestiFools, a community partner of this program, will bring several of their new puppets to the theater for the screening.



## IF YOU GO

**49th Ann Arbor Film Festival**  
[www.aafilmfest.org](http://www.aafilmfest.org)  
March 22-27, 2011 | 6:30pm

### WHERE:

The historic Michigan Theater and other locations in downtown Ann Arbor, MI.

### TICKETS ON SALE:

Passes are on sale now at [aafilmfest.org](http://aafilmfest.org).

### QUICK FACTS:

- The longest-running independent and experimental film festival in North America - established 1963.
- Variety magazine recently placed the AAFF in their Top 10 favorite festivals in the world, citing the fest's strong artistic vision and celebration of artists.
- More than 2,500 filmmakers submitted their films for consideration in 2009 from over 65 countries.
- The 2009 traveling AAFF tour screened in more than 35 cities across the world.
- The AAFF is one of a handful of Academy Award®-qualifying festivals in the United States.
- Gives more than \$20,000 in awards to directly support and reward talented filmmakers.
- Renowned for pioneering cinema, having showcased the early work of thousands of influential artists including: Gus Van Sant, Andy Warhol, Yoko Ono, Kenneth Anger, Agnes Varda and George Lucas.

**VISUAL ART | MUSEUMS**

**Arab American National Museum**

**Thru June 12**

**MOTAWI TILEWORKS**

The AANM presents a retrospective of Motawi's collections, inspirations and techniques. The Arab American National Museum is an affiliate of the Smithsonian Institution in Washington, D.C.

The Museum is located at 13624 Michigan Avenue, Dearborn. Open Wed. thru Sun. Info: 313.582.2266, [www.arabamericanmuseum.org](http://www.arabamericanmuseum.org).

**Charles H. Wright Museum of African American History**

**Ongoing Exhibition**

**AND STILL WE RISE:**

**Our Journey Through African American History and Culture**

This long-term exhibition serves as the central experience of the museum, highlighting the journey through African American history and culture. The 22,000 square-foot exhibition space contains more than 20 galleries that allow patrons to travel over time and across geographic boundaries.

The Museum is located at 315 East Warren Avenue, Detroit. Open Tues thru Sun. Info: 313.494.5800, [www.chwmuseum.org](http://www.chwmuseum.org).

**DIA (Detroit Institute of Arts)**

**Thru April 10**

**FAKES, FORGERIES & MYSTERIES**

This popular exhibition highlights some of the mistakes and other discoveries made through the years regarding artist attribution, authenticity and value of works in the DIA's collection.

**Thru April 10**

**INTUITIVE EYE: ANDRE KERTESZ PHOTOGRAPHS 1914-1969**

The exhibition surveys Kertész's career with nearly 100 photographs taken in Hungary, Paris and New York, many of which are drawn from the DIA's permanent collection.

Detroit Institute of Arts, 5200 Woodward Ave., Detroit, [www.dia.org](http://www.dia.org).

**Flint Institute of Arts**

**Thru April 17**

**PROMISES OF FREEDOM**

Selections from the Arthur Primas Collection, one of the largest and most important collections of African American art in the country. Includes works by Charles White, Jacob Lawrence, Romare Bearden and Hughie Lee-Smith. Hodge & Temporary Exhibition Galleries. Flint Institute of Arts, 120 East Kearsley St., Flint. 810.234.1695, [www.flintarts.org](http://www.flintarts.org).

**Holocaust Memorial Center**

**Mar 6**

**ART IN THE THIRD REICH**

Local art expert and WSU professor Wendy Evans will speak about how the Nazis used art to further their racial, social and military policies. 10am. Free with museum admission.



**Mar 27-July 10**

**BARSAMIAN: 20 YEARS**

**SEARCHING FOR THE ANSWER**

A vivid artistic exploration of personal identity in wake of the Armenian Genocide (1914-1919).

**Apr 19-May 16**

**WLADYSLAW BRZOSKO**

Wladyslaw Brzosko's Warsaw Ghetto series grew from dozens of charcoal and watercolor designs and studies to cover four large canvases commemorating the heroic Warsaw Ghetto Uprising that began on April 19, 1943.

Holocaust Memorial Center, 28123 Orchard Lake Rd., Farmington Hills. 248.553.2400. [www.holocaustcenter.org](http://www.holocaustcenter.org).

**Kelsey Museum of Archaeology**

**Thru May 29**

**VAULTS OF HEAVEN:**

**VISIONS OF BYZANTIUM PHASE II**

Focus is on paintings, mosaics, and architecture of the Byzantine world (6th-14th centuries AD). Free Admission. 434 South State St., Ann Arbor, 734.764.9304. [www.lsa.umich.edu/kelsey](http://www.lsa.umich.edu/kelsey).

**Kresge Museum**

**Thru March 13**

**THE BEST OF FRIENDS**

Exhibition highlighting the generous legacy of The Friends of Kresge Art Museum.

**Mar 19 - Apr 3**

**MSU MASTER OF FINE ARTS EXHIBITION**

**Apr 9- Apr 22**

**MSU DEPT OF ART & ARTHISTORY UNDERGRADUATE EXHIBITION**

Kresge Art Museum, MSU, East Lansing [www.artmuseum.msu.edu](http://www.artmuseum.msu.edu).

**MOCAD**

**(Museum of Contemporary Art Detroit)**

4454 Woodward Ave., Detroit.

[www.mocadetroit.org/upcomingexhibitions](http://www.mocadetroit.org/upcomingexhibitions).

**The Toledo Museum of Art**

**Thru May 13**

**THE EGYPT EXPERIENCE: SECRETS OF THE TOMB**

TMA's popular mummies return to public view for this exploration of ancient Egyptian beliefs about life and afterlife.

**Apr 8-July 24**

**FRANK STELLA:**

**IRREGULAR POLYGONS**

Canaday Gallery. Admission to the exhibition is free. This exhibition presents one of each of the artist's 11 monumental compositions for the Irregular Polygons series (1965-66).

Free Admission. 2445 Monroe St., one block off I-75, Toledo. 419.255.8000. [www.toledomuseum.org](http://www.toledomuseum.org).

**U-M Museum of Art (UMMA)**

**Thru June 26**

**OUT OF THE ORDINARY**

This exhibition allows visitors to explore two extraordinary collections of art-the Robert M. and Lillian Montalto Bohlen Collection of Wood Art and the Daniel and Harriet Fusfeld Folk Art Collection.

Admission to the Museum is free. \$5 suggested donation is appreciated. 525 S. State St., Ann Arbor 734.764.0395. [www.umma.umich.edu](http://www.umma.umich.edu).

**GALLERIES & ART EVENTS**



**Thru Mar 16**

**WHITE NIGHTS**

**Reception: Wed. Mar 16, 5-7pm**

Three-dimensional, magical scenes of alienation, beauty, and dark humor, both photographed and set inside snow globes by internationally-renowned artists Walter Martin and Paloma Muñoz. Institute for the Humanities Gallery, 202 S. Thayer, Room 1010, Ann Arbor. 734.936.3518, [humin@umich.edu](mailto:humin@umich.edu). [www.martin-munoz.com](http://www.martin-munoz.com).

*more>>>*

## CALENDAR OF EVENTS

**Thru Mar 17**

### **EMU ANNUAL GRADUATE STUDENT EXHIBITION**

Ford Gallery. Eastern Michigan University. 734.487.0465. [www.emich.edu/fordgallery](http://www.emich.edu/fordgallery).

**Thru Mar 27**

### **FACES: SELF-PORTRAITS BY WSG ARTISTS**

A collection by all WSG members, plus works from visiting artists on display. Also featuring the work of Steve Coron's Community High art students. WSG Gallery, 306 S. Main St., Ann Arbor, 734.761.2287. [www.wsg-art.com](http://www.wsg-art.com).

**Thru Mar 27**

### **GO FIGURE**

Figurative sculptors Chris Untalan and Mark Chatterley suggest the human form and face in radically different ways. The Ann Arbor Art Center, 117 W. Liberty St., Ann Arbor, 734.994.8004. [www.annarborartcenter.org](http://www.annarborartcenter.org).

**Thru Mar 31**

### **THINK FREEDOM**

**Reception: Mar 11, 7-9 pm**

Paintings and clayworks by artist Jennifer Lickers. Two Twelve Arts Center, 216 W. Michigan Ave., Saline. 734.944.ARTS (2787), [www.twotwelvarts.org](http://www.twotwelvarts.org).



**Thru Apr 3**

### **MINE YOURS**

A multimedia exhibit in which 30 local, regional and national artists explore at various system levels issues of possession, boundaries, privacy and encroachment. Gallery Project, 215 South Fourth Ave., Ann Arbor, 734.997.7012. [www.thegalleryproject.com](http://www.thegalleryproject.com).

**Thru Apr 3**

### **RECENT WORKS:**

#### **BILL PELLETIER & NANCY WOLFE**

Photographer Bill Pelletier, and abstract painter Nancy Wolfe, who are both established artists in the Ann Arbor scene, present a joint show of their most recent works. Kerrytown Concert House, 415 N. 4th Ave., Ann Arbor. 734.769.2999, [kerrytownconcerthouse.com](http://kerrytownconcerthouse.com).

**Thru Apr 15**

### **EMU ANNUAL FACULTY EXHIBITIONS**

University Gallery. Eastern Michigan University. 734.487.0465, [www.art.emich.edu/events](http://www.art.emich.edu/events).

**Thru Apr 27**

### **MERZE TATE**

A collection of photographs by Merze Tate (1905-1996). She achieved many "firsts" in her time, including the distinction of being the first African American to graduate from Oxford University in England. Tate traveled the world as an academic, Fulbright Scholar, and representative of the U.S. State Department. The exhibit displays many photographs from her world travels. Michigan Women's Historical Center & Hall of Fame, 213 W. Main St. Lansing, 517.484.1880, [www.michiganwomenshalloffame.org](http://www.michiganwomenshalloffame.org).

**Thru Apr 30**

### **TWO TWELVE ARTS 5TH ANNIVERSARY "FROM THE BEGINNING"**

A collection of work by artists who have helped build Two Twelve Arts Center. Reception: Apr 15, 7-9 pm. Two Twelve Arts Center, 216 W. Michigan Ave., Saline. 734.944.2787, [www.twotwelvarts.org](http://www.twotwelvarts.org).

**Mar 8 - Apr 10**

### **FUSION IN THE VISUAL ARTS**

**Opening Reception and Curator's Gallery Talk: Fri Mar 25, 7-9**

The 2011 Kreft Juried Exhibit will display the work of artists from around the country incorporating various meanings and potential approaches to this year's theme of "Fusion." Kreft Center Gallery, Concordia University, 4090 Geddes Rd., Ann Arbor. [www.cuaa.edu/kreftarts](http://www.cuaa.edu/kreftarts).

**Mar 10- Apr 7**

### **PENNY W. STAMPS DISTINGUISHED VISTORS PROGRAM**

The esteemed lecture series brings respected emerging and established artists/designers from a broad spectrum of media to engage with the UM and Ann Arbor communities.

Mar 10: Betsy Damon, Keepers of the Water

Mar 17: Number 17 Design Studio

Mar 24: Utopia in Four Movements

Mar 31: Mitchell Joachim: Envisioning Ecological Cities

Apr 7: Paul D. Miller aka DJ Spooky: Sound Unbound

All programs take place 5:10 pm Thursdays at the historic Michigan Theater, 603 E. Liberty St., Ann Arbor, Free and open to the public. Complete details: [www.art-design.umich.edu/stamps](http://www.art-design.umich.edu/stamps).

**Mar 22 - Apr 6**

### **PRISON CREATIVE ARTS PROJECT**

The 16th Annual Exhibition of Art by Michigan Prisoners is the largest exhibition of

prisoner art in the country. Free and open to the public. Duderstadt Center Gallery, UM North Campus, 2281 Bonisteel Blvd., Ann Arbor, 734.647.7673, [www.prisonarts.org](http://www.prisonarts.org).

**Mar 24-29**

### **BOTANICAL GLASS EXHIBITION**

Extraordinary works of glass art mixed with collections of exotic and unusual botanicals will dazzle visitors of the new Planterra Conservatory, as they experience unique creations from Detroit-based Furnace Design. 10-5pm. Planterra Conservatory, 7315 Drake Rd. West Bloomfield. Info: [www.botanicalglass.org](http://www.botanicalglass.org).

**Mar 25 and Apr 22**

### **SCHMIDT'S ANTIQUES 4TH FRIDAY SALE**

Featuring items from local estates and collections. 6:30pm. 5138 W. Michigan Ave., Ypsilanti, MI 48197. 734.434.2660. [www.SchmidtsAntiques.com](http://www.SchmidtsAntiques.com).

**Mar 29-May 8**

### **BLACK & WHITE PHOTOGRAPHY: 3 VISIONS**

**Reception: Fri Apr 1, 7-10pm**

Featuring the work of Terry Abrams, Dirk Bakker and Nina Hauser. WSG Gallery, 306 S. Main St., Ann Arbor, 734.761.2287, [www.wsg-art.com](http://www.wsg-art.com).

## THEATER & DANCE

**Mar 3-Apr 3**

### **THE PIANO LESSON**

The Pulitzer Prize winning drama by August Wilson, directed by Tim Rhoze. Set in 1936 in the home of an African American family from Mississippi, the story centers around a piano that was once traded for two of their slave ancestors. Performance Network Theatre, 120 East Huron St., Ann Arbor; Tickets: 734.663.0681, [www.performancenetwork.org](http://www.performancenetwork.org).

**Mar 10-13**

### **DRUID AND ATLANTIC THEATER COMPANY: THE CRIPPLE OF INISHMAAN**

The second play in Martin McDonagh's Aran Islands trilogy, The Cripple of Inishmaan is infused with his trademark humor, rich with macabre cruelty, and teeming with eccentric characters. Thurs, Fri, Sat 8pm, Sun at 2. Power Center for the Performing Arts, 121 Fletcher St., Ann Arbor. 734.764.2538, [www.ums.org](http://www.ums.org).

**Mar 10-13**

### **DOUBT**

Ann Arbor Civic Theatre presents John Patrick Shanley's Pulitzer Prize-winning drama Doubt, directed by Matt Martello, Fri, Sat at 8pm, Sun at 2pm. Arthur Miller Theatre, 1226 Murfin Ave, North Campus, Ann Arbor. Tickets call 734.971.2228 or online at [www.a2ct.org](http://www.a2ct.org).

**Mar 11-Apr 2  
LAST OF THE BOYS**

Examines an all too familiar, still-open wound: the Vietnam War. Magenta Giraffe Theatre Company, 1515 Broadway, Detroit. 313.408.7269, [www.magentagiraffe.org](http://www.magentagiraffe.org).



**Mar 20  
EISENHOWER DANCE ENSEMBLE:  
MOTOWN IN MOTION**

The premier dance company celebrates the iconic Detroit sound with an evening of dance and Motown music. The program features music from Diana Ross and the Supremes, the Contours, Michael Jackson and Marvin Gaye. Detroit Opera House, 1526 Broadway, Detroit. 313.961.3500, [www.michiganopera.org](http://www.michiganopera.org).

**Mar 21  
ARTIST TALK & RECEPTION**

Meet the artist collaborators who created the current exhibition *Photoformance: An Empathic Environment*. Experiments in dance, photography, and architecture come together to create this multimedia environment. Mon. 5pm. Free admission. UM Museum of Art, Helmut Stern Auditorium, 525 South State St., Ann Arbor. [www.music.umich.edu](http://www.music.umich.edu).

**Mar 24-May 28  
SOME COUPLES MAY...**

A World Premiere by Carey Crim and directed by Guy Sanville. On the heels of *Growing Pretty and Wake*, this bittersweet comedy charts one woman's journey with her family through the challenges and heartbreak of infertility to the promise of motherhood. The Purple Rose Theatre, 137 Park St., Chelsea; 734.433.7673, [www.purplerosetheatre.org](http://www.purplerosetheatre.org).

**Mar 24-27  
LITTLE WOMEN**

Presented by the University Opera Theatre & University Philharmonia Orchestra. A delightful 1998 opera by Mark Adamo based on the beloved novel by Louisa May Alcott about four New England sisters. Thurs thru Sun. Tickets: 734.764.2538. Mendelssohn Theatre, 911 N. University, Ann Arbor. [www.music.umich.edu](http://www.music.umich.edu).

**Mar 24-27  
JAMES AND THE GIANT PEACH**

Ann Arbor Civic Theatre's Junior Theatre presents a stage version of Roald Dahl's beloved children's book. Tickets: \$5. Washtenaw Community College Theater. Info: [www.a2ct.org](http://www.a2ct.org).

**Mar 25 & 26  
EN-COM-PASS**

The performance showcases the 2011 Master of Fine Arts in Dance candidates Jessica Bonenfant, Sean Hoskins, and Susie Thiel. Fri & Sat 8pm. \$5 General Admission. Duderstadt Center (Media Union) Video Studio, UM North Campus [www.music.umich.edu/performances](http://www.music.umich.edu/performances).

**Mar 27  
LOVE FLOWS: AN ISLAMIC  
DANCE DRAMA WITH GAMELAN**

F. X. Widaryanto, a famous Javanese choreographer, and his dance and music students of the University of Michigan Gamelan. Sun 4pm. Free - no tickets required. Hill Auditorium, 825 North University Avenue, Ann Arbor. [www.music.umich.edu](http://www.music.umich.edu).



**Mar 30-Apr 3  
PROPELLER  
SHAKESPEARE'S  
RICHARD III  
AND A COMEDY  
OF ERRORS**

Propeller, the internationally celebrated, innovative Shakespeare company led by Edward Hall, presents new productions of two of Shakespeare's

greatest contrasting masterpieces. The two plays will be presented in repertory with the same cast. Power Center for the Performing Arts, 121 Fletcher St., Ann Arbor. 734.764.2538, [www.ums.org](http://www.ums.org).

**Mar 31-Apr 3  
THE CRUCIBLE**

Arthur Miller's Tony Award-winning scathing condemnation of censorship set against the 1692 Salem witch trials. Thurs. (sold out), Fri & Sat 8pm, Sun 2pm. Tickets: 734.764.2538. Walgreen Drama Center, UM North Campus, Ann Arbor. [www.music.umich.edu/performances](http://www.music.umich.edu/performances).

## CALENDAR OF EVENTS

**Apr 1 thru 9**

### INTIMATE APPAREL

A touching rendering of Esther, a seamstress who seeks love and a better life in New York in 1905. Winner of the 2004 NY Drama Critics Circle Award. Appropriate for ages 13+. Check website for dates and times. Quirk-Sponberg Theatre at Eastern Michigan University. 734.487.2282, [www.emich.edu/emutheatre](http://www.emich.edu/emutheatre).

**Apr 6**

### NT LIVE: FRANKENSTEIN

Oscar winner Danny Boyle (Slumdog Millionaire, Trainspotting) returns to his theater roots, directing a play by Nick Dear based on Mary Shelley's novel, Frankenstein. UMS presents the NT Live Series (High-Definition Broadcasts from the National Theatre, London). Prices start at \$12. Wed at 7pm. Michigan Theater, 603 East Liberty Street, Ann Arbor. 734.764.2538, [www.ums.org](http://www.ums.org).

**Apr 7-10**

### THE MIKADO

A perennial favorite presented by the University of Michigan Gilbert & Sullivan Society (UMGASS). Tickets: 800.838.3006 or online: [www.brownpapertickets.com/event/155209](http://www.brownpapertickets.com/event/155209). Lydia Mendelssohn Theatre, Michigan League, 911 N. University, Ann Arbor. [www.umgass.org](http://www.umgass.org).



**Apr 9-17**

### THE MAGIC FLUTE

By Wolfgang Amadeus Mozart. One of the most beloved works in the operatic repertoire. Premiered in Vienna, 1791 and is now the 8th most performed opera in North America. Detroit Opera House, 1526 Broadway, Detroit. 313.961.3500. [www.michiganopera.org](http://www.michiganopera.org).

**Apr 14-17**

### BRIGADOON

Presented by UM Dept. of Musical Theatre. A lyrical fantasy by Alan Jay Lerner and Frederick Loewe where love makes anything possible - even miracles. Tickets: League Ticket Office 734.764.2538. Lydia Mendelssohn Theatre, Michigan League, 911 N. University, Ann Arbor. [www.music.umich.edu](http://www.music.umich.edu).

**Apr 15-17**

### NUNSENSE

"A hail of fun and frolic! Wacky and outrageous with a hysterical anything goes sense of fun!" N.Y. Times. Fri. & Sat. at 7:30pm, Sun. at 3pm. A Tecumseh Players Production. Tecumseh Center for the Arts, 400 N. Maumee St., Tecumseh. 517.423.6617, [www.thetca.org](http://www.thetca.org).



**Apr 29**

### GOLDEN DRAGON ACROBATS

Award-winning acrobatics, traditional dance, spectacular costumes, ancient and contemporary music present a show of breathtaking skill and spell-binding beauty in this National Touring Show. Fri 7:30pm. Special family ticket pricing. Tecumseh Center for the Arts, 400 N. Maumee St., Tecumseh. 517.423.6617, [www.thetca.org](http://www.thetca.org).

## MUSIC

**Mar 6**

### METAMORPHOSIS BY AARON DWORKIN

A compelling multimedia presentation of visual art, spoken word, and music by the founder and president of the internationally acclaimed Sphinx Organization and MacArthur Fellow. Sun 6pm. Free - no tickets required. UM Museum of Art, Helmut Stern Auditorium, 525 S. State St., Ann Arbor. [www.music.umich.edu](http://www.music.umich.edu).

**Mar 11**

### BLACK VIOLET: ACT II

Fifth House Ensemble from Chicago returns to Concordia for the second part of their collaboration with graphic novelist Ezra Clayton Daniels, melding music, vivid art, imagery and riveting narrative about the Black Plague. Fri 8pm. Tickets \$5-\$10. 734.995.4612. Chapel of the Holy Trinity, Concordia University, 4090 Geddes Rd., Ann Arbor. [www.cuaa.edu/kreftarts](http://www.cuaa.edu/kreftarts).

**Mar 11**

### UM SYMPHONY BAND

Program includes Shostakovich, Festive Overture; Husa, Music for Prague; Chen Yi, Dragon Rhyme; Chen Qian, "Come, drink one more cup of wine"; Williams - Four themes from Star Wars. Fri 8pm. Free. Hill Auditorium, 825 North University Avenue, Ann Arbor. [www.music.umich.edu](http://www.music.umich.edu).

**Mar 11**

### IBRAHIM AMINOU

"African Journey" World music. Fri 8pm. Kerrytown Concert House, 415 N. 4th Ave., Ann Arbor. Tickets: 734.769.2999, [www.kerrytownconcerthouse.com](http://www.kerrytownconcerthouse.com).



**Mar 12**

### A GERSHWIN RHAPSODY

Acclaimed pianist Alvin Waddles plays the composer's Rhapsody in Blue, and Rackham Symphony Choir performs Porgy and Bess in concert with soloists Kimwana Doner and Eric Greene. Also included is a selection of Gershwin favorites. Sat 7:30pm. Detroit Opera House, 1526 Broadway, Detroit. Tickets: 313.237.SING, Ticketmaster or [www.MichiganOpera.org](http://www.MichiganOpera.org).

**Mar 12**

### RUSSIAN ROMANCE

Don't miss the rare opportunity to hear the Rachmaninoff Piano Concerto No. 3 in D minor, Op. 30 performed by Israeli pianist Roman Rabinovich with the Ann Arbor Symphony. Sat. 8pm. Michigan Theater, 603 E. Liberty, Ann Arbor. 734.994.4801, [www.a2so.com](http://www.a2so.com).

**Mar 12**

### WORLD PERCUSSION ENSEMBLE

Presenting the story of Chango, the deified Yoruba King, told through traditional Afro-Latin rhythms, songs, jazz harmony, and spoken word. Joined by members of the UM Men's Glee Club. Sat 8pm. Free. Hill Auditorium, 825 N. University Avenue, Ann Arbor. [www.music.umich.edu](http://www.music.umich.edu).

**Mar 13**

### SEA TO SHINING SEA

Family Concert Series with the Ann Arbor Symphony. Includes the William Tell Overture, In the Hall of the Mountain King and Vivaldi's Four Seasons. Sun 4pm. Michigan Theater, 603 E. Liberty, Ann Arbor. 734.994.4801. [www.a2so.com](http://www.a2so.com).

**Mar 13**

### THE IRISH ROVERS

The international ambassadors of Irish music are back, delivering a rollicking, rousing performance just in time for St. Paddy's Day. Sun

3pm. Tickets \$28 adult/\$24 student/senior. Tecumseh Center for the Arts, 400 N. Maumee St., Tecumseh. 517.423.6617, www.thetca.org.

**Mar 13  
UM CONCERT BAND**

With the Michigan Youth Band. Sun 7:30pm. Free. Hill Auditorium, 825 N. University Avenue, Ann Arbor. www.music.umich.edu.

**Mar 19  
THE FAB FAUX**

Performing the Beatle's Abbey Road in its entirety. Sat 7:30pm. Michigan Theater, 603 E. Liberty, Ann Arbor. TicketMaster.com and outlets. www.michtheater.org/events.

**Mar 19  
FESTIVAL OF VOICES**

UM School MTD Chamber Choir, UMS Choral Union, MSU Children's Choir. Sat 8pm. Free. Hill Auditorium, 825 N. University Avenue, Ann Arbor. www.music.umich.edu.

**Mar 20  
CONCORDIA UNIVERSITY  
WIND ENSEMBLE CONCERT**

Sun 4pm. Free. Chapel of the Holy Trinity, Concordia University, 4090 Geddes Rd., Ann Arbor. www.cuaa.edu/kreftarts.

**Mar 22  
ROBERT SPAULDING NEWCOMB**

Solo sitar, guitar and poetry reading. Tues 8pm. Kerrytown Concert House, 415 N. 4th Ave., Ann Arbor. 734.769.2999. www.kerrytownconcerthouse.com.

**Mar 29  
MAHLER'S SIXTH**

Kenneth Kiesler conducts the combined forces of UM Symphony Orchestra and the Philharmonia Orchestra for this rare performance of Mahler's Sixth. Tues 8pm. Free -no tickets required. Hill Auditorium, 825 N. University Avenue, Ann Arbor. www.music.umich.edu.

**Apr 1  
DAVE SHARP & THE SECRET SEVEN**

Part 2: Journey to India. Fri 8pm. Kerrytown Concert House, 415 N. 4th Ave., Ann Arbor. 734.769.2999, kerrytownconcerthouse.com.

**Apr 1  
WATER COOLERS**

A New York-based comedy group that uses Broadway talent to deliver hilarious songs and sketch comedy about work, life, and everything in between. Think Seinfeld set to music. Fri 7:30pm. Tecumseh Center for the Arts, 400 N. Maumee St., Tecumseh. 517.423.6617, www.thetca.org.



**Apr 2  
ST. PETERSBURG PHILHARMONIC**  
With pianist Nikolai Lugansky in his UMS debut. Yuri Temirkanov, conducts the program of Rimsky-Korsakov Scheherazade, Op. 35, And Rachmaninoff Piano Concerto No. 2 in c minor, Op. 18. Sat 8pm. Hill Auditorium, 825 N. University Avenue, Ann Arbor. 734.764.2538, www.ums.org.

**Apr 7  
SEPTETO NACIONAL  
IGNACIO PINEIRO**

Champions of the traditional sound of the Cuban son for more than 80 years, the ensemble performs some of the most treasured and well-known Cuban songs. Thurs 8pm. Hill Auditorium, 825 N. University Avenue, Ann Arbor. 734.764.2538, www.ums.org.

**Apr 8  
TAKACS QUARTET:  
SCHUBERT CYCLE 3**

The University Musical Society presents the superlative Takács Quartet in the final concert of 2010-11. Sun 4pm. Rackham Auditorium, 915 E. Washington Street, Ann Arbor. 734.764.2538, www.ums.org



**Apr 16  
SECRET AGENT: TONY ALLEN'S  
AFROBEAT TOUR**

The drummer behind the legendary Nigerian bandleader Fela Anikulapo Kuti, Tony Allen is probably the most highly regarded African drum set player today. Sat 8pm. Hill Auditorium, 825 N University Avenue, Ann Arbor. 734.764.2538, www.ums.org.

**Apr 17  
EMPIRE BRASS**

After a multiple-standing-ovation concert last year, Empire Brass returns for what has become an annual event at Concordia. Sun 4pm. Tickets: 734.995.4612. Chapel of the Holy Trinity, Concordia University, 4090 Geddes Rd., Ann Arbor. www.cuaa.edu/kreftarts.

**APR 30  
MAHLER'S THIRD**

The Ann Arbor Symphony performs Mahler, Symphony No. 3 in D minor. Featuring soprano Melody Racine, UMS Choral Union Women's Chorus and Ann Arbor Youth Chorale. Arie Lipsky conducts. Sat 8pm. Michigan Theater, 603 East Liberty, Ann Arbor. Tickets: 734.994.4801, www.a2so.com.

**OTHER EVENTS**

**Mar 22-27  
THE 49TH ANNUAL  
ANN ARBOR FILM FESTIVAL**

www.aafilmfest.org. (See page 24 for more information.)

**Apr 1  
FOOLMOON**

A new evening event by FestiFools featuring an enormous procession of hand-made illuminated sculptures and lanterns. Fri at 8pm. Washington Street, downtown Ann Arbor. www.festifoos.org. (See ad on back cover).

**Apr 3  
FESTIFOOLS**

Ann Arbor's Annual Festival of Huge Puppets, now in it's fifth year. 4pm Sun. Downtown Ann Arbor. www.festifoos.org. (See Page 30 for more information.)

**Apr 8-23  
ONE PAUSE POETRY**

Celebrate National Poetry Month with a variety of events at Copper Colored Mountain Arts, 7101 W. Liberty, Ann Arbor. www.ccmarts.org.

**Apr 16  
DANCE FOR THE EARTH**

The Ecology Center's annual Earth Day celebration. Join the eco-party with live music, great local food, cash bar, silent auction, and more. Sat 8-11pm. Tickets: \$12.50 in advance, \$15 at the door. Cash bar. Downtown Home & Garden, 210 S. Ashley, Ann Arbor. Info: ken@ecocenter.org or 734.761.3186 ext. 120. www.ecocenter.org.

## ArtPrize Announces 2011 Registration Dates



Officials of ArtPrize, a radically open art competition giving away the world's largest art prize, have announced the 2011 registration dates for venues and artists and special dates for submitting art to be installed in the Grand River. ArtPrize 2011 will run from Sept. 21 through Oct. 9.

### Artist Registration

Open: Monday, April 18  
Close: Thursday, June 16 (5 p.m. EDT)

### Artist/Venue Matching

Open: Tuesday, May 31  
Close: Thursday, June 30 (5 p.m. EDT)

ArtPrize Executive Director Bill Holsinger-Robinson cautions artists,

"The vast majority of artists who did not secure a venue in 2010 were the ones who signed up at the last minute. Register early."

ArtPrize has invited thousands of artists worldwide to register for ArtPrize 2011, which will award the world's largest cash prize for art totaling \$484,000. Prizes include: First place \$250,000, second place \$100,000, third place \$50,000, fourth through tenth places \$7,000 each, and five juried awards at \$7,000 each.

ArtPrize is a radically open competition which has no formal jury, curator or judge, and asks the public to vote and decide the winners using mobile devices and the Web. In ArtPrize 2010, more than 1,700 artists from all over the world participated in the unprecedented competition that awarded nearly \$500,000 to the prize winners. More than 465,000 votes were cast during the 19-day event. For more information about ArtPrize visit [www.artprize.org](http://www.artprize.org).

## River Gallery in Chelsea Calls for Sculpture

River Gallery is seeking submissions for the 3rd annual *SculptureWalk Chelsea*, which takes place June 16, 2011 with a reception at the gallery.

The selected sculptures will be placed in high profile locations, outdoors in the heart of historic Chelsea. Artists are invited to submit up to three works. Each artist selected will receive a \$300 compensation. A "Best in Show" prize of \$500 will be awarded by voting.

The postmark deadline is April 29. The application can be found at [www.chelsearivergallery.com](http://www.chelsearivergallery.com). For more information, call the gallery at 734.433.0826. River Gallery is located at 120 S Main St., Chelsea, MI.

## Winefest 2011 Information Announced



The Ann Arbor Art Center has announced the date and location for Winefest 2011.

Winefest is described by organizers as a creative, eclectic, unexpected and much anticipated fundraising event in support of the Ann Arbor Art Center, where attendees will enjoy incredible food, fine wines and exceptional

experiences throughout the evening.

It is scheduled to take place on Saturday, May 7, 2011 at 7pm (the Premiere Patron Reception begins at 5:30pm) at Warehouse 345 on Metty Drive (off Jackson Road between Zeeb and Baker roads) in Ann Arbor. For ticket information, go to [www.annarborartcenter.org](http://www.annarborartcenter.org).

## FestiFools Adds New Nighttime Event—Fool Moon



Photo by Myra Klarman

Festifoos organizers have announced an addition to its April FestiFools weekend—FoolMoon, which will take place on April Fools Night, Friday, April 1st, 2011 from Dusk to Midnight. This moonlight event will feature a procession of hand-made illuminated sculptures carried by dancing teams of merrymakers as they thread their way downtown to Washington St., west of Main, in the heart of Ann Arbor.

Local artists and community members will create glowing handmade sculptural lanterns in preparation for this spectacular illuminated extravaganza. Free drop-in lantern

making workshops for FoolMoon will be held every Sunday in March from 10am-5pm at Workantile on Main Street. FoolMoon is destined to become one of Ann Arbor's most unique public art events bringing the entire community together for a springtime eve of moonlit beauty, spectacle, and celebration.

To become a special FoolMoon participant/sponsor please contact FestiFools organizers for details (before the next FoolMoon) at <http://festifoos.org>.

**GOTHIC ARCH STAINED GLASS WINDOW**

This Gothic arch stained glass window hails from a church in France, circa 1850. Its panels are painted, fired, and stained glass creating a regal design. Either incorporated into your own display or hung as is, one gaze at this window with its stunning hand blown roundels will have everyone amazed. Measuring roughly 18" by 18" and on sale for \$195.00. Item (#404166) Find it only at Materials Unlimited, 2 W. Michigan Ave., Ypsilanti, MI 48197.

**734.483.6980 | [www.materialsunlimited.com](http://www.materialsunlimited.com)**

**ANTIQUE WALNUT SPOOL CABINET**

J & P Coats' circa 1870 with original paper label on back.  
\$750.00

The Treasure Mart, 529 Detroit St. in Kerrytown, Ann Arbor.

**734.662.9887 | [www.treasuremart.com](http://www.treasuremart.com)**



## New Sculpture Installation by Local Artists/Businesses Complements Renovation Project at Ann Arbor's West Park

As the Historic City of Ann Arbor West Park renovation nears completion, a site specific sculpture by Traven Pelletier has been finished and installed in the park, creating a new and dynamic space on the hillside overlooking the bandshell.

The work includes two 11' high steel sculptures as well as surrounding stone work. Entitled *TREEform*, the piece is integrated with the landscape on new concrete benches installed in the Band-shell area of the park. Conceived to complement and enliven the theater space, the installation unifies the benches, band-shell, and new landscape work in this area.

In creating the piece Traven Pelletier found "the challenge of creating a beautiful work within the limits of the time and budget for the city was a wonderful opportunity. It brought a great deal of expertise, generosity, commitment and creativity from the community members who helped. In addition to design and inspiration acting as my thread to weave, this has truly become a community project."

A local artist and co-owner of Lotus Gardenscapes Inc., Pelletier has enlisted the help of many local businesses to create the piece. Lotus Gardenscapes donated both equipment and stone to integrate with the bench area. Rich Cox of Orion Auto in Ann Arbor donated his time and space to fabricate the piece collaboratively with Traven and another local artist Tad McKillop. Dave Palermo of Palermo's Collision in Whitmore Lake has created a unique and beautiful copper fade color



scheme and painted both pieces. Nick Lawler of SDI in Ann Arbor provided structural design and drawings for fabrication. A-1 Roll of Mount Clements, MI provided rolling facilities and expertise to create the bent tubular steel for the piece. The Sculpture project is being promoted in collaboration with Copper Colored Mountain Arts.



# Fool Moon

PRESENTED BY:

**FESTIFOOLS**

**APRIL 1, 2011**

**DOWNTOWN ANN ARBOR**

**DUSK TO MIDNIGHT**

**[www.festifools.org](http://www.festifools.org)**

Ad Design by Nathan Chmielewski